



SCHOOL DISTRICT NO. 73
(Kamloops-Thompson)

WELCOME

**NORTH SHORE AND BROCKLEHURST
ELEMENTARY SCHOOL COMMUNITY
ROUND ONE ZOOM CONSULTATION**

MAY 9, 2023

6:30 PM - 8:00 PM

Land Acknowledgement



We respectfully honour and acknowledge that we are meeting in the unceded territory and lands of the Secwepemc peoples, where we live, love, and learn every day.



Rhonda Nixon,
Superintendent



Bill Hamblett,
Assistant
Superintendent
Secondary



Grant Reilly,
Assistant
Superintendent
Early Learning &
Elementary



Trina Cassidy,
Secretary-
Treasurer



Vessy Mochikas,
Assistant
Superintendent
Inclusive Education



Art McDonald,
Director of
Facilities





John Wiedrick
Associate
Superintendent



Rick Kienlein
Director of
Secondary
Learning
Services



Wayne Pinette
Director of
Information and
Technology



Robbie Talon
Director of
Finance



Sherry Kristjanson
Director of
Transportation



Lisa Carson
Director of
Curriculum
and
Instruction



ENGAGEMENT PROCESS



Round one- community engagement

- **Tonight, we provide information and an opportunity through a moderator to share your comments or questions.**
- **During the session, please submit questions through the “Q&A” tab.** As time permits at the end of the presentation, I will read questions out loud and answer those that we can answer.
- **Any questions not answered in the session,** will be added to the Frequently Asked Questions summary on the SD73 website:
<https://www.sd73.bc.ca/en/our-district-board/faq.aspx>



SD73

COMMUNITY /
PARENTS &
STUDENTS

OUR DISTRICT /
BOARD

SCHOOLS /
PROGRAMS

WHAT'S
HAPPENING /
NEWS

**To submit
questions after
the session,**

Go to the SD73
Website

www.sd73.bc.ca

And click on the
box that looks like
this



SCHOOL DISTRICT NO. 73
(Kamloops - Thompson)



How to get Involved!

If you are a parent or staff member in the Brocklehurst Middle School, NorKam Senior Secondary School, or Elementary schools in these communities, you are invited to take part in two rounds of community consultation about the proposed grade reconfiguration on the North Shore and Brocklehurst in 2024.

Round One: In round one, there will be an approximately 45-minute presentation with information and an opportunity to ask questions and offer feedback in the chat.

Round Two: In round two, parents are invited to submit a 5 min max. presentation (written) submission that identifies which recommendation they are addressing and their positions with a rationale. A total of 10 presentations will be accepted for each community engagement session.

Please see the dates and times set aside for your community in the drop-down menu.

Important note: For parents and staff who are not able to attend these sessions, we will post the recorded sessions [here](#).

FAQ will be posted [here](#).

Click the FAQ “here”



Frequently Asked Questions

As we experience round one and two of community engagements about the proposed changes to North Shore and Brocklehurst grade configurations and catchments, we will answer questions from those sessions and from those submitted to: [HERE](#)

Submit Questions

Please review the session recordings if you miss them: [HERE](#)

Watch recordings

If you want to RSVP to attend a session connected to your community, please see the session dates and times listed under Round one and two community engagements: [HERE](#)

Sessions



ENGAGEMENT PROCESS



Round two- community engagement

- June 1, 2023 6:30-8:00 PM
- Submit to present (5 min) public presentations of questions and/or comments.
- To submit, contact Dana Heyman: dheyman@sd73.bc.ca



PURPOSE



- To share this presentation that has been shared with focus groups in the Brocklehurst and North Shore communities.
- To share their feedback on the recommendations within it.
- To respond to comments and feedback.



RATIONALE



We have a Board of Education comprised of 9 elected School Trustees.

In Board Policy 2,

The Board of Education is responsible for catchment changes and grade reconfigurations, and for community engagement as outlined in Administrative Procedure 135: Reconfiguration of Schools.



RATIONALE



In **Administrative Procedure 135: Reconfiguration of Schools:**

4.3 During the public engagement, the Superintendent will provide the parent/school community with the following:

4.3.1 The issue under consideration

4.3.2 The objectives and criteria for considering the reconfiguration

4.3.3. Options being considered and supporting information

4.3.4. Process for school community engagement



BACKGROUND



- **Public Board Meeting on June 14, 2021**, the Board received the [Boundary Review Report](#) which indicated that the **expected enrolment of Brocklehurst Middle School** was to increase each year and peak at **936 students by 2028** and the Board requested “further in-depth study of whether Brocklehurst Middle School was too large.”
- Since that board meeting, **we have engaged in 28 consultations in the communities impacted (Brocklehurst and North Shore) and conducted research into the size of middle schools provincially.**
- **Brocklehurst Middle School** is the **ninth largest middle school** provincially and the Brocklehurst staff, administration, and parents have spent the last few months reviewing this question by sharing their experiences, and they confirmed that they are too large now.

PROJECTED ENROLMENT AT BROCK



PROJECTED ENROLMENT AT BROCK (JANUARY 2023)



Year	2022	2023	2024	2025	2026	2027	2028	2029	2030	2031
Enrolment	763	790	788	810	817	825	869	856	859	850
Capacity	102%	105%	105%	108%	109%	110%	116%	114%	115%	113%

**Ave. size
550-600**

Enrolment continues to increase over time and the school remains one of the highest enrolments for middle schools provincially.



THE ISSUE



Due to **concerns regarding the size of Brocklehurst Middle School**, we examined whether we need to **complete catchment changes and grade reconfigurations** on the North Shore and Brocklehurst coinciding with the **opening of the new Parkcrest Elementary School in the Spring of 2024.**



BROCK FEEDBACK- SUMMARY



Issue: Yes, the majority of staff feel that the school population is too big to manage, and they are asking for a change to address it.

Request: Reconfigure to be a Gr. 8-12 school.

Positives: sense of community, athletics on par with the district, consistent across the district with grade configurations, leverages staff expertise, increases collaboration, refreshes Brock, opens up electives.

Challenges: change is hard and we will need time to prepare and resources.



NORKAM FEEDBACK- SUMMARY



Brock's Issue/Request: NorKam Staff and Parents supported a Grade 8-12 reconfiguration when Parkcrest reopens.

Positive: school culture and spirit, know students longer, leverages staff expertise, diversity of students from a catchment change is good, builds relationships between students, staff, & parents; IB would have longer to develop; consistency between schools.

Challenges: Change is hard and we need time to prepare and resources.



MOTIONS (May 1, 2023)



Motion 1: To consult the North Shore and Brocklehurst staff and parent communities about the reconfiguration of the current grades for the following schools:

- Brocklehurst Middle School (Gr. 7-9) becomes a Gr. 8-12 school in September, 2024
- NorKam Senior Secondary School (Gr. 10-12) becomes a Gr. 8-12 school in September, 2024
- AE Perry, Arthur Hatton, Bert Edwards, Kay Bingham, Parkcrest Elementary, and Rayleigh each become K-7 schools in September 2024.

Motion 2: To consult the North Shore and Brocklehurst staff and parent communities about the proposal to re-open George Hilliard as a K-7 school in September 2024.



MOTIONS



Motion 3: To consult the North Shore and Brocklehurst staff and parent communities about the proposal to engage in a catchment change for the following schools in September 2024:

- Brocklehurst Middle School (Gr. 8-12)
- NorKam Senior Secondary School (Gr. 8-12)
- AE Perry (K-7)
- Arthur Hatton (K-7)
- Bert Edwards (K-7)
- Kay Bingham (K-7)
- Parkcrest (K-7)
- Rayleigh (K-7)



MOTIONS



Parkcrest Elementary School is to be completed by December 2023.

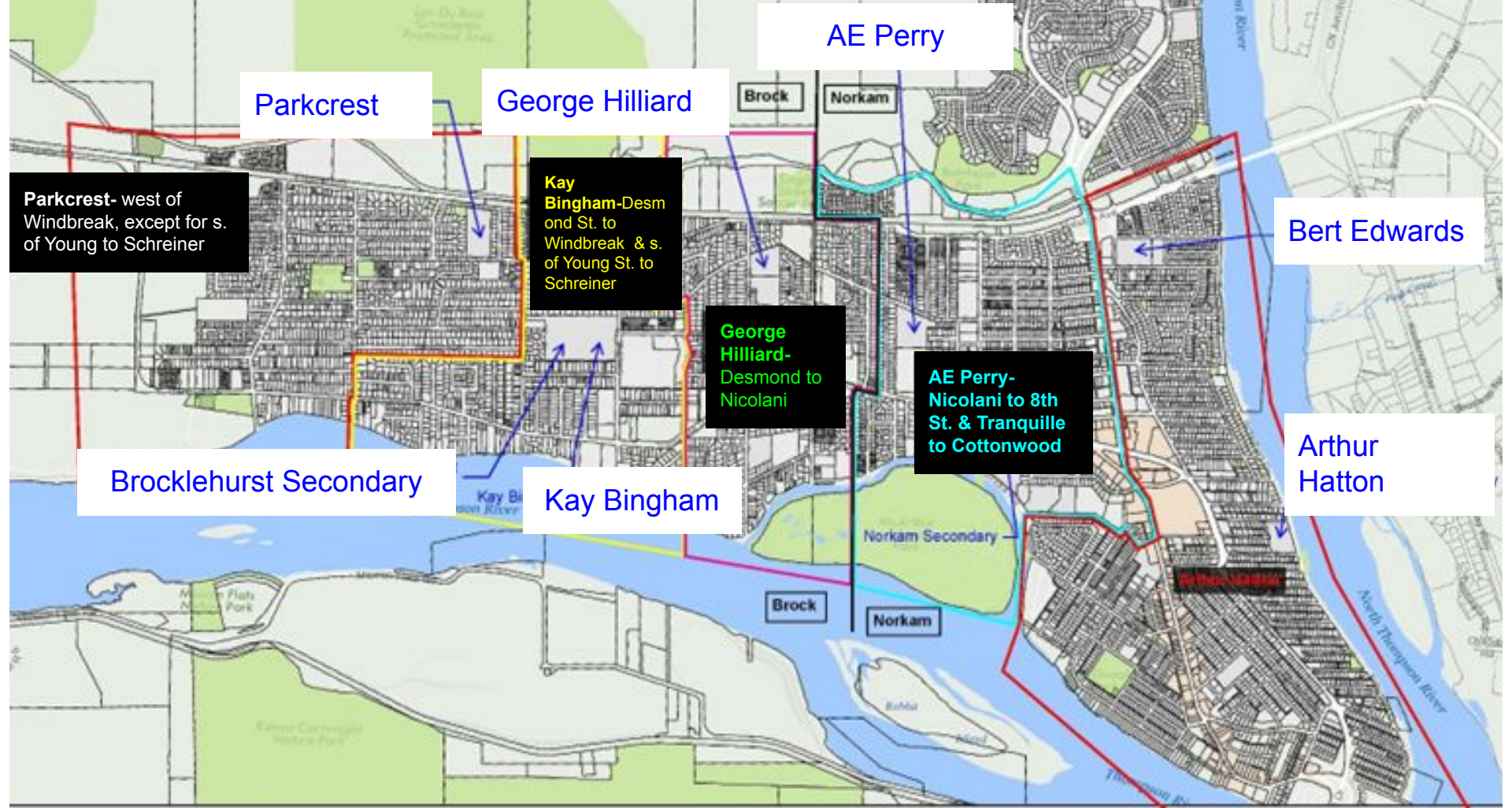
Motion 4: To consult the North Shore and Brocklehurst staff and parent communities about the proposal to re-open Parkcrest Elementary School as K-7 in the Spring of 2024 at 2170 Parkcrest Avenue.



Proposed Catchment Changes

George Hilliard opens as K-7 school





AE Perry

Parkcrest

George Hilliard

Brock

Norkam

Parkcrest- west of Windbreak, except for s. of Young to Schreiner

Kay Bingham-Desmond St. to Windbreak & s. of Young St. to Schreiner

George Hilliard-Desmond to Nicolani

AE Perry-Nicolani to 8th St. & Tranquille to Cottonwood

Bert Edwards

Brocklehurst Secondary

Kay Bingham

Arthur Hatton

Brock

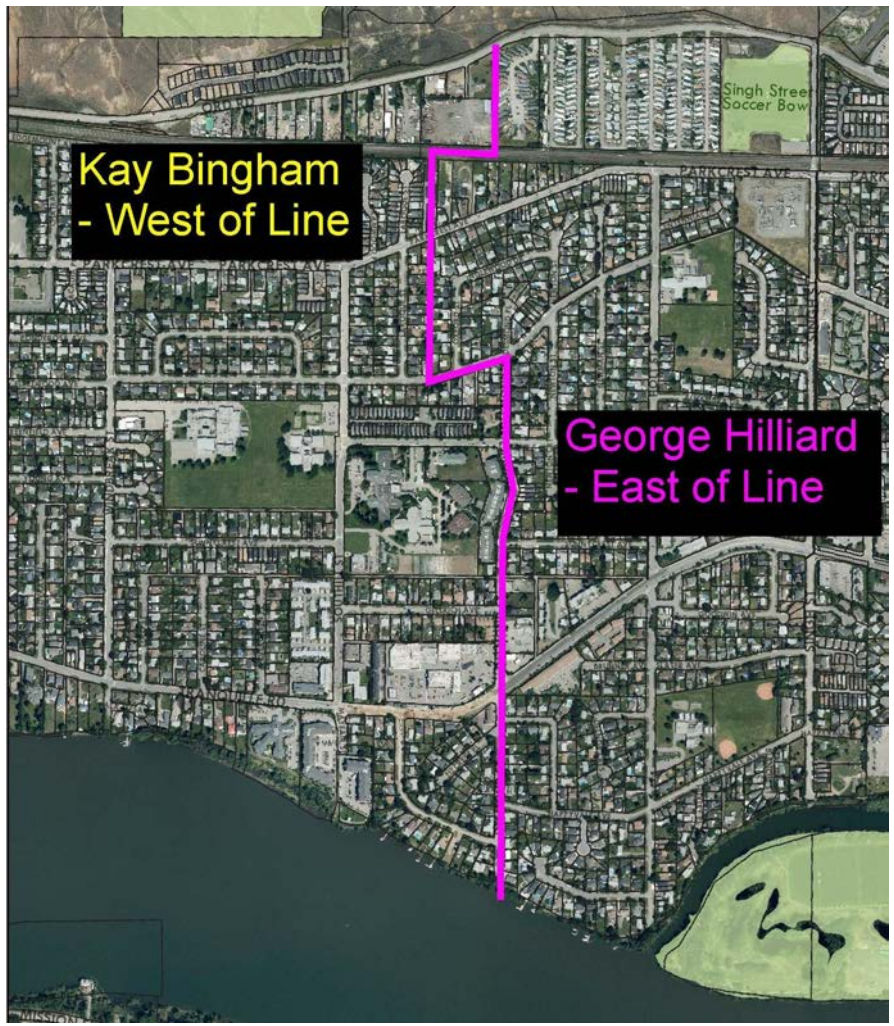
Norkam

Norkam Secondary

0 287.5 575 1,150

**Kay Bingham
- West of Line**

**George Hilliard
- East of Line**





Parkcrest -
West and North
of Line

Kay Bingham -
East and South
of Line

Proposed Catchment Changes - George Hilliard opens as K-7 school

Pros

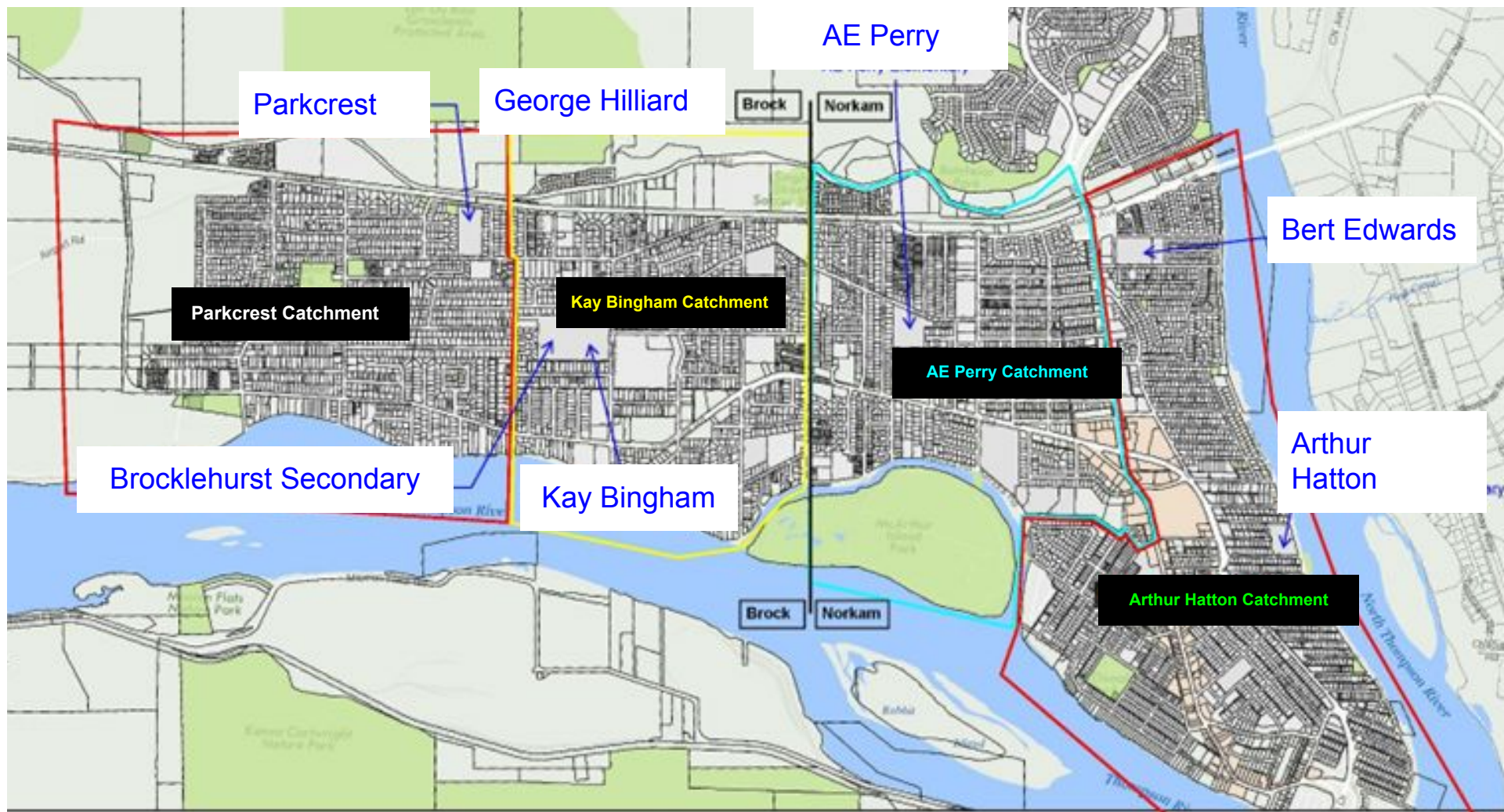
- Fixes “Brock Middle School is too big”.
- Fewer portables required at the elementary schools.
- More students at Brocklehurst Secondary.
- Better balance between the secondary school enrolments.
- More room for growth in the elementary schools.

Cons

- Catchment line along Nicolani is quite close to AE Perry - may result in many transfer requests.
- Catchment line along Nicolani is quite close to NorKam Secondary - may result in many transfer requests.
- One or more TREC programs are relocated out of Happyvale due to space constraints.
- More catchment changes for elementary schools.

Proposed Catchment Changes

George Hilliard **does not** open as K-7 school and TREC (3 programs) moves in



AE Perry

Parkcrest

George Hilliard

Brock

Norkam

Bert Edwards

Parkcrest Catchment

Kay Bingham Catchment

AE Perry Catchment

Brocklehurst Secondary

Kay Bingham

Arthur Hatton

Arthur Hatton Catchment

0 287.5 575 1,150

*The City of Vancouver does not guarantee the location or boundaries of Parkcrest or any other school. Parents contacting

Proposed Catchment Changes - George Hilliard **does not** open as K-7 school and TREC (3 programs) moves in

Proposed Configuration	Grades	Ministry Operating Capacity	Enrolment		Projected Enrolment								
			2022	2023	2024	2025	2026	2027	2028	2029	2030	2031	2032
			Brocklehurst Secondary Zone										
George Hilliard Elementary	K-7	294			0%	0%	0%	0%	0%	0%	0%	0%	0%
Kay Bingham Elementary	K-7	341	88%	81%	99%	98%	98%	98%	98%	98%	98%	98%	98%
Parkcrest Elementary	K-7	337	106%	110%	91%	91%	95%	99%	101%	104%	108%	108%	111%
Brocklehurst Secondary	8-12	850	90%	93%	57%	68%	69%	69%	72%	75%	73%	74%	74%

NOTE: Enrolments include 2024 grade 7 students staying at their current school and 2024 grade 12 students staying at NorKam.

Norkam Secondary Zone													
A. E. Perry Elementary	K-7	294	106%	107%	117%	114%	113%	110%	109%	108%	108%	108%	108%
Arthur Hatton Elementary	K-7	317	82%	82%	94%	93%	92%	91%	91%	91%	94%	95%	95%
Bert Edwards Science & Tech	K-7	341	72%	71%	80%	79%	79%	79%	79%	79%	80%	79%	79%
Heffley Creek Elementary	K-3	145	9%	10%	10%	10%	9%	8%	8%	8%	8%	9%	8%
Rayleigh Elementary	K-7	298	70%	69%	79%	79%	79%	78%	76%	73%	72%	71%	71%
Sun Peaks School	K-9	159	75%	87%	92%	97%	104%	106%	108%	107%	108%	109%	110%
Norkam Secondary	8-12	1,025	836	88%	94%	87%	87%	89%	89%	84%	83%	84%	80%

Proposed Catchment Changes - George Hilliard **does not** open as K-7 school and TREC (3 programs) moves in

Pros

- Fixes “Brock Middle School is too big”.
- Elementary catchment boundaries remain as is.
- Singh St. was the previous boundary between Brock and NorKam.
- TREC (3 programs) stay together.
- This option requires the least change for all involved.

Cons

- More portables are required at the elementary schools.
- Fewer students at Brocklehurst Secondary and more students at NorKam Secondary.
- Less balanced enrolments between the secondary schools.
- Less room for future growth in elementary schools.

Implications



If George Hilliard becomes a K-7 in 2024:

- **TREC would be in different locations.**
- **George Hilliard** will be at 74%
- **Kay Bingham** will be at 66%
- **Parkcrest** will be at 78%
- **Brocklehurst** will be at 66% (goes up in 2025)
- **AE Perry** will be at 95%
- **Arthur Hatton** will be at 94% (with 1 portable, to retain LART room)
- **Bert Edwards** will be at 80%
- **Rayleigh** will be at 79%
- **Norkam** will be at 87% (goes down in 2025)
- **Catchment boundary changes** for several elementary schools

If George Hilliard becomes TREC (Alt. Ed., Bridges, Four Directions) in 2024:

- **TREC would be in one location.**
- **George Hilliard** will be at 70% with TREC.
- **Happyvale** will be at 0% (elementary utilization)
- **Kay Bingham** will be at 99% with 1 portable.
- **Parkcrest** will be at 91%
- **Brocklehurst** will be at 57% (goes up in 2025)
- **AE Perry** will be at 117% with 2 portables.
- **Arthur Hatton** will be at 94% (with 1 portable, to retain LART room).
- **Bert Edwards** will be at 80%
- **Rayleigh** will be at 79%
- **Norkam** will be at 94% (goes down in 2025)
- **No catchment boundary changes** for elementary schools

includes 2024 grade 7 and grade 12 students staying at current school.

Twin Rivers Education Centre - Located at Happyvale

Twin Rivers Education Centre (TREC) 3 Alternative Education Programs at Happyvale



Grades	# of Students	Name of Program
Gr. 10-12	188	Alternative Education
Gr. 7-9	11	Bridges
Gr. 8-12	34	Four Directions



TREC Feedback Shared on March 13, 2023



- **TREC staff feedback:** space and programming pressures, and promise to return to George Hilliard.
- We stated at that time that we would engage in **in-depth consultation with TREC** and **continue consultation with each school community** and report back to the Board.



TREC STAFF FEEDBACK NOW



- **April 13, 2023- TREC staff met** with the senior team to review recommendations and provide their feedback.
- **Result:** The majority of TREC staff supported the three recommendations including recommendation 2, to make George Hilliard a K-7 school in Sept. 2024.
- **Concerns to work through:** Staff are still concerned about space and programming, but they accept that we will work with them to address them (e.g., an odour in a portable, remove gym equipment in the gym and put in portables). Other requests will be addressed (facility changes, programming changes, staffing) with coordination through Assistant Superintendent Mochikas. Transportation was also identified as an issue.
- **Staff supported an additional recommendation:** Bridges will move to Brocklehurst Middle School possibly as early as September 2023. At this time, Four Directions and Alternative Education would remain in Happyvale for 2023-2024.

ABORIGINAL EDUCATION COUNCIL FEEDBACK



Points Considered	Responses/Discussion
Locations for TREC	Smaller locations are thought to be better and consultation with staff and parents as it has been happening is important.
Programming	A focus on outdoor education, electives, and active engagement is critical and programming that will ensure success to earn an academic dogwood. Ensure that we continue speciality programs such as academies, and even look into expanding them.
Transportation	Review transportation to reduce problems such as safety concerns at bus exchanges, and buses being too full or not coming.



MOTION



Motion 5: To consult the North Shore and Brocklehurst staff and parent communities about the proposal to move Bridges to Brocklehurst Secondary (Gr. 8-12) and to keep Alternative Education and Four Directions at Happyvale by September 2024.



ELEMENTARY SCHOOLS FEEDBACK



Themes from Elementary Staff Feedback	Options considered by district staff
Catchment change in Spring	The reason for the current catchment change where it is (Taking a portion of what was Parkcrest and making it Kay Bingham is because when Parkcrest re-opens, Kay Bingham would become quite small).
Empathy for TREC students	We provided answers regarding each suggestion and shared that Assistant Superintendent Mochikas was examining all possible spaces, including George Hilliard.



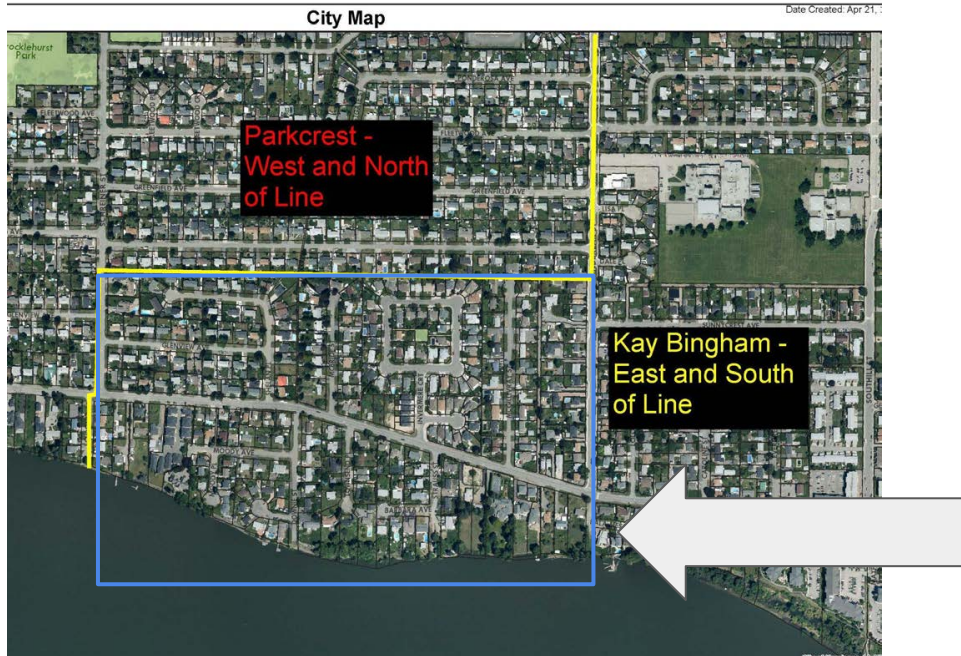
ELEMENTARY SCHOOLS FEEDBACK



Space pressures in elementary schools	We confirmed that we understand and know that limited space is problematic to serve complex students' needs, so we are seeking options for how to use either existing or leased space.
Moving and support	We confirmed that staff would be provided with materials to move in January and they would have assistance to move boxes into classrooms. They would be provided time to move.
Long view	We confirmed that it is also our goal to make decisions that are sustainable for the long term.



MOTION



Motion 6: To consult the North Shore and Brocklehurst staff and parent communities about the proposal to provide the choice to Parkcrest Elementary students and their siblings who, prior to September 2024, live in the proposed new Kay Bingham Elementary catchment area as presented to attend Parkcrest Elementary School until the end of their elementary program in grade 7.



BOARD FEEDBACK



Points Considered	Responses/Discussion
<p>Concerns about Kay Bingham at a capacity utilization of 50%, so one option is to provide the Parkcrest students who are in the Kay Bingham catchment as of 2024 the option to move earlier (Sept. 2023), if that were to be the decision.</p>	<p>It would cause Kay Bingham to be at a capacity utilization of 114% for 2023 which would require two portables.</p> <p>Therefore, it wouldn't solve the issue initially, but it would prevent the school from decreasing suddenly and create more stability between 2023-2024. One trustee commented that we can explain the 50% capacity utilization is due to extraordinary circumstances.</p> <p>The question is: Is 172 students a viable elementary school?</p>



BOARD FEEDBACK



Points Considered	Responses/Discussion
<p>Sept. 2024 Parkcrest Re-opens instead of Spring 2024</p>	<p>Parkcrest would be empty for 9 months, which does not look good politically.</p> <p>We would need to consider the time needed to prepare for the re-opening of Parkcrest and the re-opening of George Hilliard.</p> <p>If everything stays at GH, then the principal of Parkcrest could start there early to prepare the school (order and receive resources, furniture). GH students who are to go to KB are still going to be introduced to the new school and then having to move to KB. It does not solve the 50 students feeling upset about the move. It also means that the GH Principal does not have time to welcome and transition the students into the school to create a sense of community.</p>

ADVISORY COMMITTEE FEEDBACK



Change is about choosing to be positive.

We have to be positive when we talk about it with the students and parents. When this took place over a decade ago, the first year was bad, but then it went well.

Acknowledge that it will be hard and point out the positives

Comment: Grade 9s this year become grade 10 next year and go to Norkam in 2023-2024 and then may need to return to Brock in grade 11 and the graduate in Brock. So, two changes could be a lot.

R: To let grade 11s in 2024-2025 in NorKam along with the grade 12s stay would mean that NorKam would have 993 students in 2024-2025 and 97% capacity utilization. Brock would have 456 students and 54% capacity utilization. **In 2024 Brock would be an 8-10 school and in 2025 Brock would be an 8-11 school.** The result is imbalance enrolment between the secondary schools. This would disadvantage Brock's programming and make space a challenge in NorKam for those years.

ADVISORY COMMITTEE SUMMARY



- **Support** the 6 recommendations including letting the 50 students stay at Parkcrest.
- **Manage the 50% capacity at Kay Bingham** by investing funds to make it work until the enrolment increases.
- **Be upfront about the current grade 9s who go into grade 10 in 2023-24 as having one year at NorKam and then returning (potentially) to Brock.** This needs to be understood as necessary due to NorKam becoming too large.
- **Help those students see the benefits:** They know the teachers and they have friends. They are exposed to the trades center and IB; they are senior for two years (return to be senior in gr. 11 and 12) at Brock



SUMMARY



- Overall, elementary and secondary staffs and PACs supported recommendations 1, 2, 3 and 4, and we are only starting to review recommendations 5 and 6.
- TREC staff were not all present for the reviews of information on April 13th and there is still some trepidation about remaining in Happyvale (recommendation 2).



SUN PEAKS - UNIQUE HISTORY



Dates	Grades	Designated Catchment School Elementary	Designated Catchment School Gr. 7, 8 and 9	Designated Catchment School Gr. 10-12
2012-2013	K-5	Sun Peaks K-5 Rayleigh Gr. 6	Brocklehurst Middle School	NorKam Senior Secondary School
2013-2014	K-6	Sun Peaks K-6	Brocklehurst Middle School	NorKam Senior Secondary School
2017-2018	K-7	Sun Peaks K-7	Brocklehurst Middle School	NorKam Senior Secondary School



SUN PEAKS



Dates	Grades	Designated Catchment School Gr. 6/7	Designated Catchment School Gr. 8/9	Designated Catchment School Gr. 10-12
2020-2021	K-9	Sun Peaks K-9	Sun Peaks K-9	NorKam Senior Secondary School
2022-2023	K-9	Sun Peaks K-9	Sun Peaks K-9	NorKam Senior Secondary School
2023-2024	K-9	Sun Peaks K-9	Sun Peaks K-9	NorKam Senior Secondary School
*2024	K-9	Sun Peaks K-9	Sun Peaks K-9	NorKam Senior Secondary School



SUN PEAKS



Motion 7: To consult the Sun Peaks community about the recommendation to have the Board approve that grades 10, 11, and 12 Sun Peaks students continue to have NorKam Secondary (Gr. 8-12) as their designated catchment area high school in the Fall of 2024.



SUN PEAKS



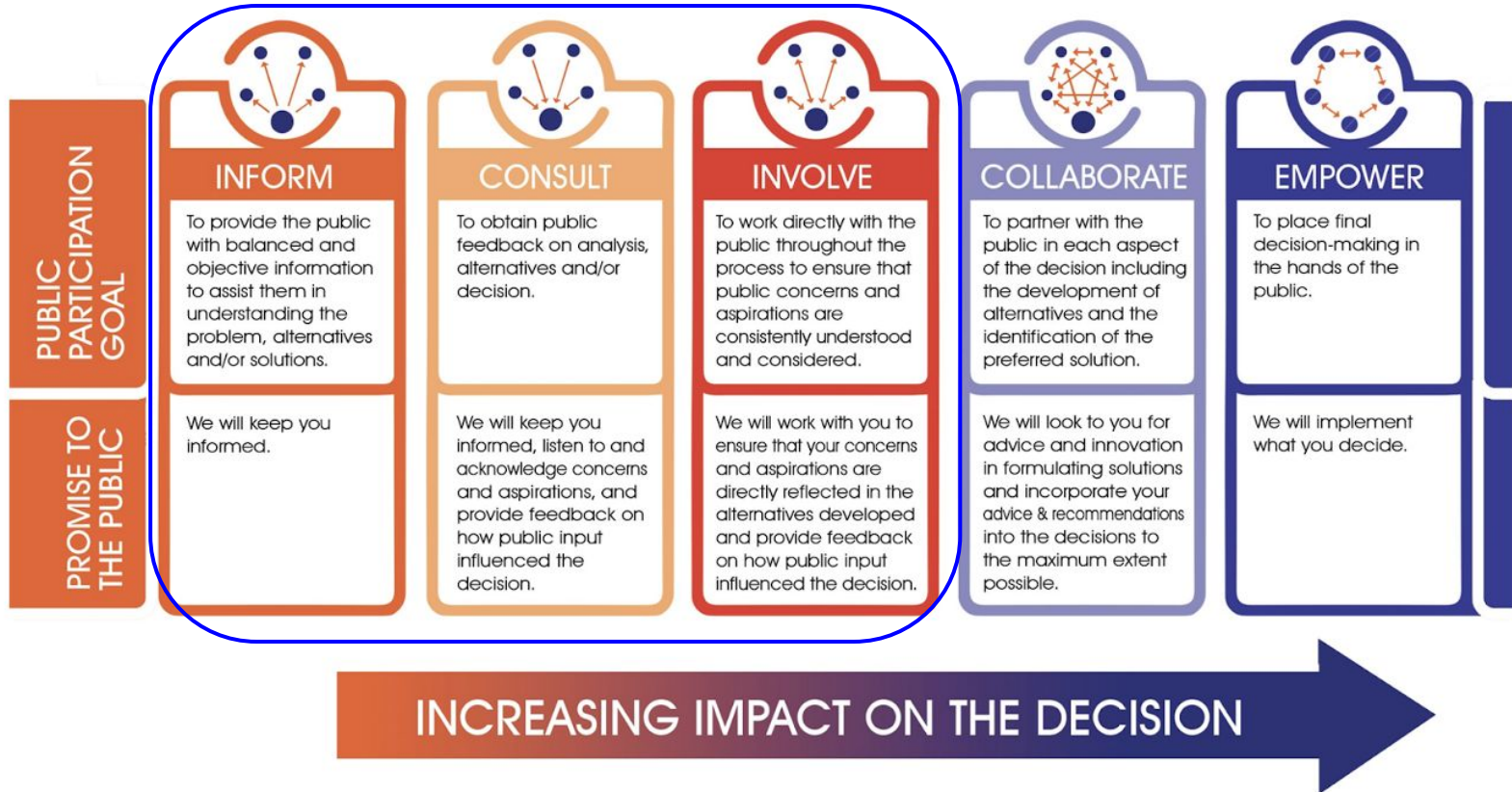
Motion 8: To consult the Sun Peaks community about the recommendation to have the Board approve Sun Peaks School (K-9) to continue as the designated catchment area school for K-9 Sun Peaks students in the Fall of 2024. Sun Peaks students in grades 8 and 9 who prefer to attend Brocklehurst or NorKam secondary schools would adhere to the transfer request process outlined in [AP305 - School Boundaries and Student Transfer Requests](#).



COMMUNITY ENGAGEMENT PLAN



PUBLIC SPECTRUM OF COMMUNITY ENGAGEMENT



FEEDBACK MEETINGS



Community Consultations- Round One (Trustees)

May 4- 6:30-8:00 - Brocklehurst Middle School

May 8- 6:30- 8:00- NorKam Senior Secondary

May 9- 6:30-8:00- Elementary Schools

May 10- 6:30-8:00- TREC

May 31, 2023 6:30-8:00- Sun Peaks & Heffley Creek

Come and Join Us on Zoom

- Come to listen and learn what the issue is and feedback provided
- Ask clarifying questions
- Offer feedback
- Email feedback
- Check growing FAQs
- Mark your Calendars-Round Two



FEEDBACK MEETINGS



Community Consultations- Round One (Trustees)

May 12

May 15

May 4- 6:30-8:00 - Brocklehurst Middle School

May 8- 6:30- 8:00- NorKam Senior Secondary

May 9- 6:30-8:00- Elementary Schools

May 10- 6:30-8:00- TREC

May 31, 2023 6:30-8:00- Sun Peaks & Heffley Creek

Advisory
Committee-
Reviews
feedback

Board of
Education

Report on
feedback to
date.



FEEDBACK MEETINGS



Community Consultations- Round Two (Trustees)

May 16- 6:30-8:00 - Brocklehurst Middle School

May 23- 6:30- 8:00- NorKam Senior Secondary

June 1- 6:30-8:00- Elementary Schools

June 7- 6:30-8:00- TREC

June 14- 6:30-8:00 - Sun Peaks & Heffley Creek

60-min approximately for 10 public presentations.

30-min appr. for questions and feedback through Q & A.



FEEDBACK MEETINGS



Community Consultations- Round Two (Trustees) May 29, 2023

June 19, 2023

May 16- 6:30-8:00 - Brocklehurst Middle School

May 23- 6:30- 8:00- NorKam Senior Secondary

June 1- 6:30-8:00- Elementary Schools

June 7- 6:30-8:00- TREC

June 14- 6:30-8:00 - Sun Peaks & Heffley Creek

**Board of
Education**

**Report on
feedback to
date.**

**Board of
Education-**

**Motion on
recommendations.**



HOW CAN I JOIN ROUND ONE AND TWO?



- **Email:** All families have received an email on May 2
- **School Principals:** Your school principals have been sent the Round 1 and 2 Community Engagement Session information



- **Website:** sd73.bc.ca
- **RSVP Dana Heyman** dheyman@sd73.bc.ca if you would like to present in Round 2

