

Information Session for Parents of English Language Learners



Co-presented by :
ELL Resource Teachers from SD73
&
Settlement Workers in Schools (SWIS) from KIS



Tuesday October 22, 2024, 5-7 pm
Kamloops Immigrant Services: 448 Tranquille Rd (and virtual)

- +
-
-

Land Acknowledgment

We acknowledge that we are on the traditional and unceded territory of the Tk'emlups te Secwepemc people. We are thankful and respect the people, the territory and the land that houses our community.





What grade is your child in?

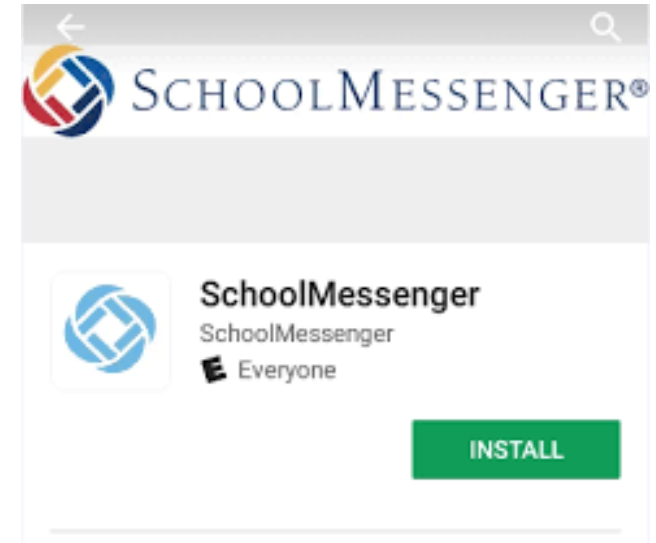
Your child is placed in a grade based on the year they were born.

From grades K-7, students will remain with their peers that were born in the same year.

In high school, there may be changes based on your child's academic progress.

Attendance

- Please let your school know if your child will be absent from school (sick, family trip, appointment, etc...).
- Either call the school or report it on the School Messenger app before 8:30am on the day they will be away.
- You can also enter the absence ahead of time.
- Regular attendance is important for continuity in learning.



"Working together
for quality
public education."

School District No. 73
(Kamloops/Thompson)
Student Absence Reporting

To report your child's absence
please call this toll free number
before 8:30am
1-844-350-2647



Safe ARRIVAL

What is your child learning?

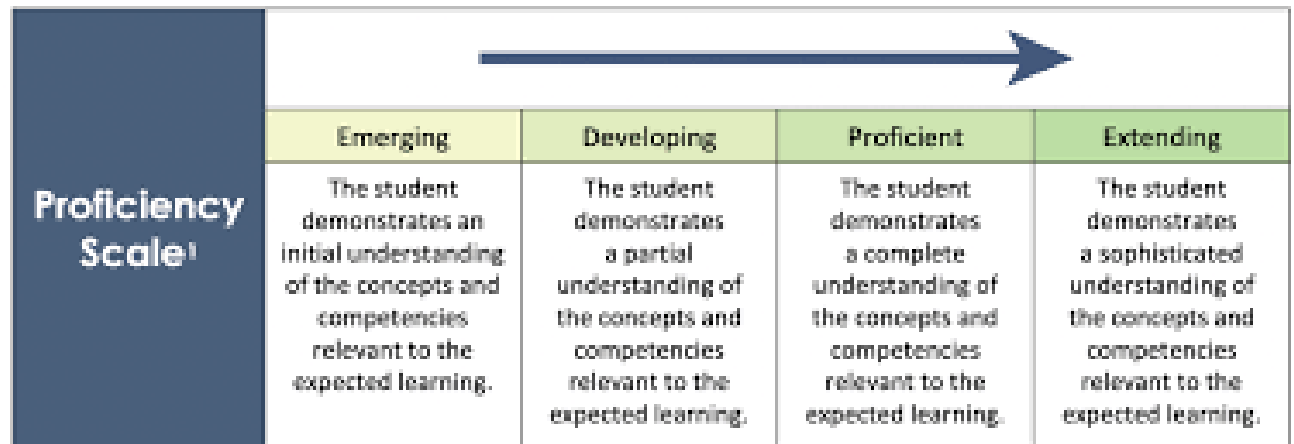
The classroom curriculum is created by the Ministry of Education.

The classroom is a non-competitive environment; all student levels are supported.



Learning Updates

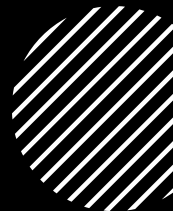
- Teachers report on your child's progress three times a year in elementary school and four times a year in secondary school
- In grades K-9, teachers will use a proficiency scale to show where the student is at in each subject: Emerging, Developing, Proficient, and Extending
- Students in grades 10-12 will receive percentages and grades



Proficiency Scale ¹	Emerging	Developing	Proficient	Extending
	The student demonstrates an initial understanding of the concepts and competencies relevant to the expected learning.	The student demonstrates a partial understanding of the concepts and competencies relevant to the expected learning.	The student demonstrates a complete understanding of the concepts and competencies relevant to the expected learning.	The student demonstrates a sophisticated understanding of the concepts and competencies relevant to the expected learning.



Public Education is free, but....



Families are required to pay some fees for things such as:



School supplies



Field trips



Sports



Music programs



Meal programs



If your family is experiencing financial hardship, please contact your school administrator or your SWIS for support.

ELL support at school

Any student who speaks a different home language is eligible to receive extra support to help achieve English language proficiency.



All students access language support in their classrooms.



Intercultural awareness is encouraged; we celebrate language and cultural diversity.



Students may receive small group support to help acquire speaking, reading and writing skills.



ELL service is provided as a benefit; it helps students thrive and reach their academic goals!



Social-emotional well-being is important for all students. Counselling supports are available if required.

Keep your Home Language!

Bilingualism or multilingualism (speaking more than one language) is an asset – a great skill to have!

It helps cognitive development, is part of one's identity, and allows for future opportunities.


Students may be able to use their primary language to access the curriculum.

The goal is to be proficient in both English and the home language.

There are more than 60 home languages reported in SD73!



Get involved!



There are many opportunities for students and families to make school and community connections:

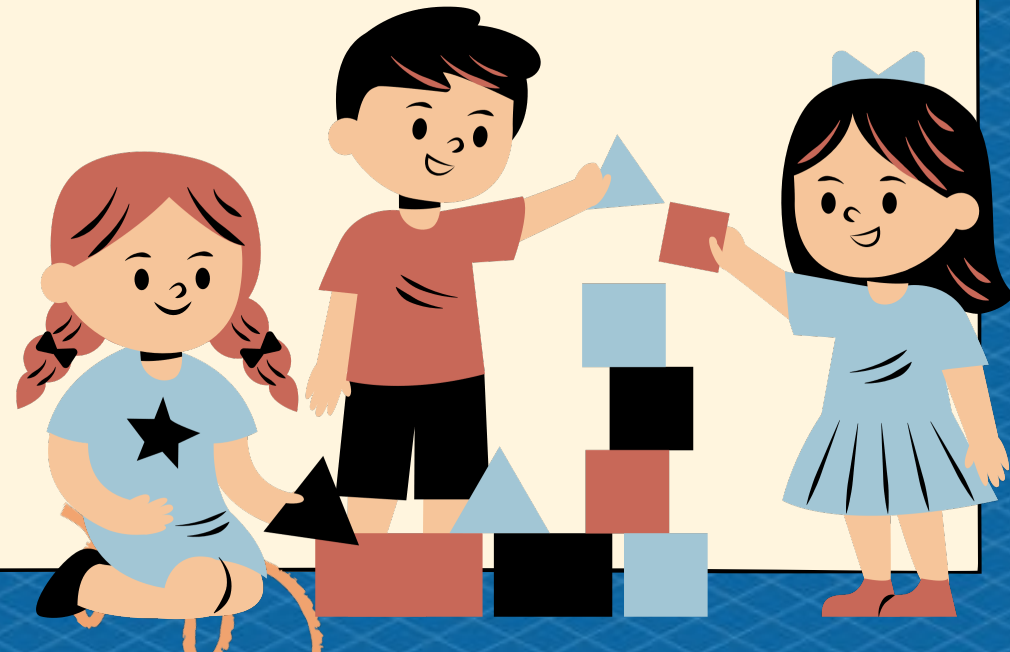
- School sports teams
- Extra-curricular after school programs
- Community swimming and skating lessons
- Public library programs
- Community and school events (Halloween, Diwali)

SWIS can help you!

Settlement Worker in Schools (SWIS)

Kamloops Immigrant Services
448 Tranquille Road, Kamloops, B.C. V2B 3H2

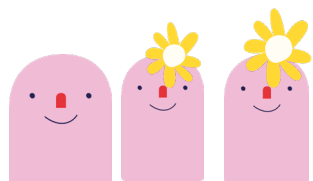
Clara Kong - clara@Kcris.ca
Anna Ediger - swis@kcris.ca
Sam Birchall- sam@kcris.ca



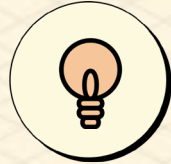


Settlement Worker in Schools (SWIS) Program

- The SWIS program supports newcomer school-age students across School District 73 as they transition into the Canadian School system.
- The SWIS program supports newcomer parents in navigating the Canadian school system.



School Transition Timeline



YEAR 1 -3

- SWIS support with school communication
- SWIS support with school forms
- SWIS support with advocacy
- SWIS support with extra-curricular activities



YEAR 4 - 6

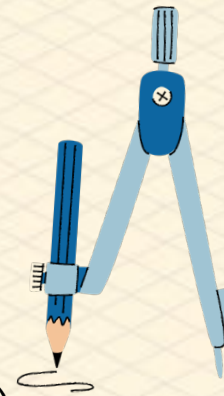
- Minimal support from SWIS worker.
- Families will communicate with school-staff independently (using Google Translate etc).
- Families will be able to advocate for their children's school needs.
- Families will be able to register their children for extra-curricular activities with minimal support from SWIS staff.



YEAR 6 ONWARDS

- Families will be able to navigate the Canadian School system independently.
- Families have formed meaningful friendships and connections to help them succeed in the

Canadian school system





INTERPRETATION AND TRANSLATION SUPPORT



- School staff can request interpretation and translation support through a SWIS worker for meetings with families.
- Newcomer parents actively participating in LINC/English classes can request interpretation support to communicate with school staff through the SWIS worker.



SWIS Supports around school needs

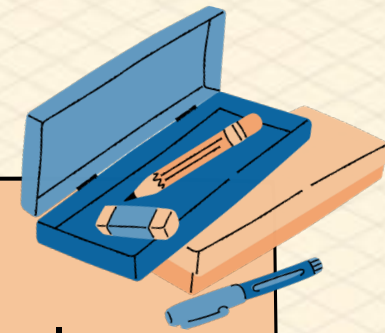


1. Parent-teacher meeting
2. Bullying and conflict resolution
3. School forms
4. Understanding the district's school walk policy
5. Supports around registration for school bus (if a student qualifies)
6. Connecting newcomer school-age students to extra-curricular activities.
7. Supporting newcomer students in accessing a pediatrician to verify a diagnosis.

Connecting families to community resource



- Employment
- Health matters (physical and mental)



- Community Connection

- Other needs that may arise as families transition into a new community.



Mentoring, Empowerment and Tutoring (MET) Program



PROGRAM OBJECTIVE

- To close learning gaps so students can stay on par with their peers.



AT THE END OF THE
PROGRAM, STUDENTS WILL
DEMONSTRATE THE

FOLLOWING:

1. Confidence to practice self-directed learning.
2. Ability to self-advocate and communicate confidently in the English Language.
3. Ability to practice different Social-Emotional Learning strategies.



Time for Questions

You can speak or use the chat feature on zoom.

Are you wondering about....

- Graduation?
- Special Ed support?
- Assessments? Literacy and Numeracy, FSA, NFRA...

Please ask us! We would love to help.



Additional Resources

- BC Curriculum: [website](#) and [Orientation Guide](#)
- [SD73 ELL parent website](#)
- [Settlement Worker in Schools](#)
- Video: [Keep Your Home Language](#) (from Waterloo School Board)
- [Surrey Schools Reporting Information](#) (available in Arabic, Chinese, French, Hindi, Korean, Punjabi, Spanish, Tagalog, Vietnamese)



