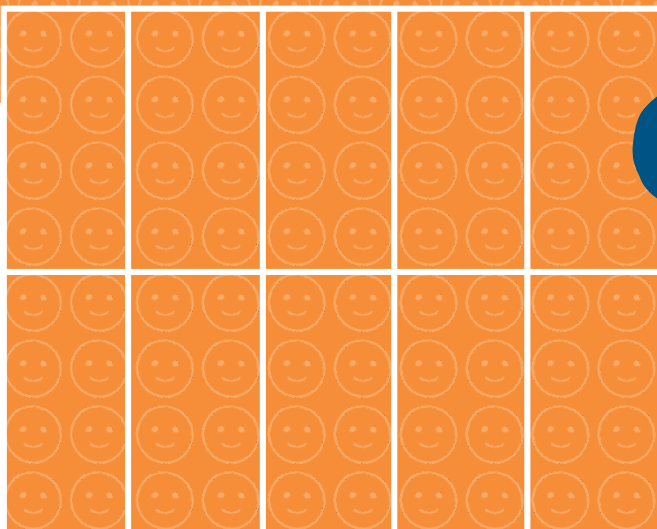


Growing Concerns...

Invest in our Kamloops-Thompson Students and Schools



SD73 URBAN PORTABLES:

64 portables are attached to 17 of the schools in Kamloops, which is 35% of our schools.



SCHOOL DISTRICT NO. 73
(Kamloops-Thompson)

School District No. 73 (Kamloops-Thompson)
is geographically almost the size of **Vancouver Island**.

School District No. 73 (Kamloops-Thompson) operates 48 schools across 27,000 sq km, and 12 communities in the Interior of BC. We address both urban and rural challenges in operating a large school district. SD73 employs 2,650 people and has an annual budget of \$207 million dollars.

48
SCHOOLS

27,000
SQUARE KILOMETRES

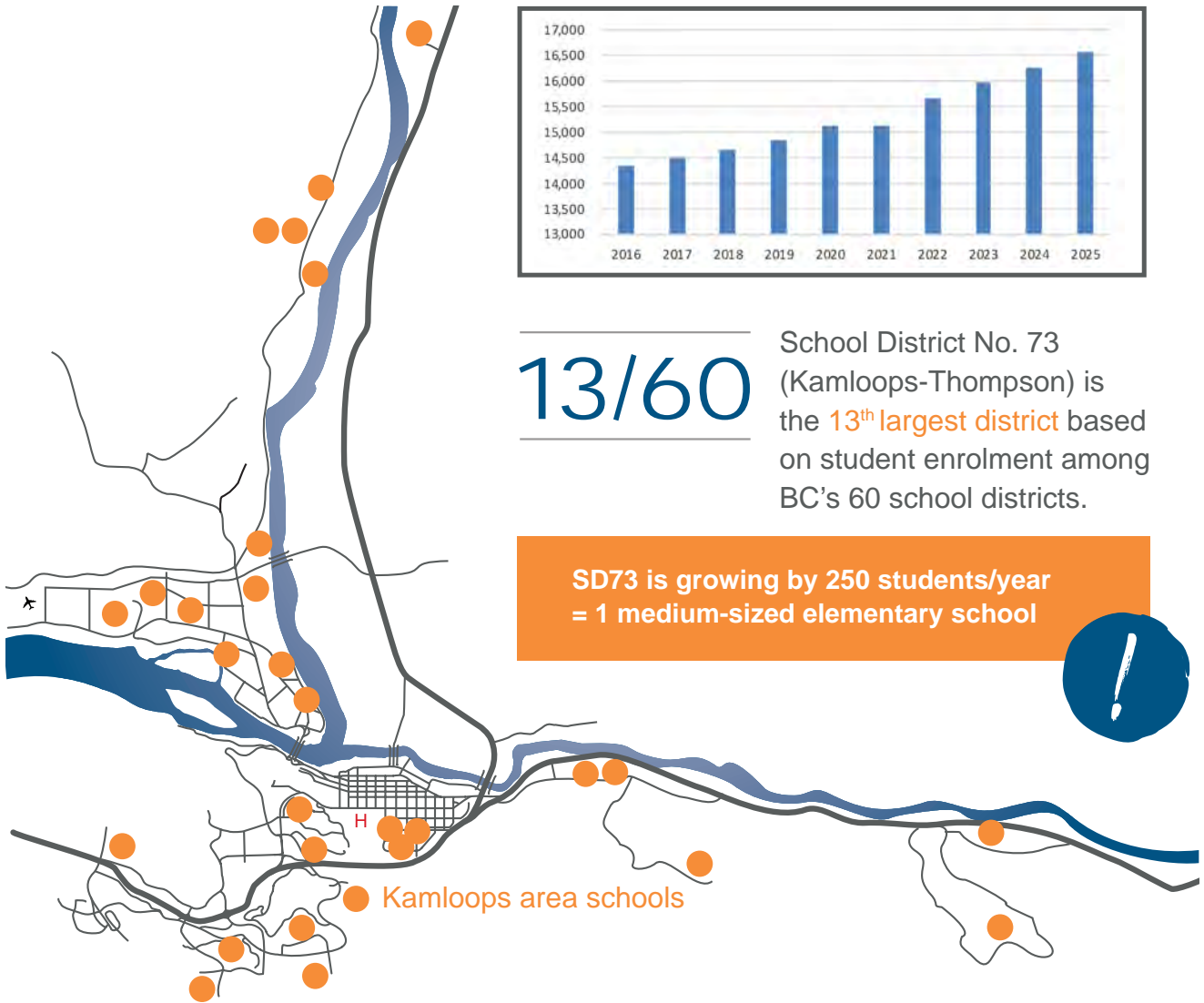
12
URBAN & RURAL COMMUNITIES

2,650
EMPLOYEES

\$207
MILLION ANNUAL BUDGET



Our numbers are big and growing.



13/60

School District No. 73 (Kamloops-Thompson) is the 13th largest district based on student enrolment among BC's 60 school districts.

SD73 is growing by 250 students/year = 1 medium-sized elementary school



↑8.4% KAMLOOPS POPULATION INCREASE BETWEEN 2016–2021

+7,622 PEOPLE

Kamloops' population has increased by 8.4 percent over the past five years according to the first release from the 2021 census from Statistics Canada.

Overall, Kamloops is the 12th-most populated city in B.C. and the 61st in Canada, with a reported population of 97,902 within city limits, which extend north to include Heffley Creek, east to include Campbell Creek, south to include Knutsford and west to include Tranquille. That means there are 7,622 more people in the city than there were in 2016.

The greater Kamloops area is among the **five fastest-growing metropolitan areas in the country**, with four of the top five located in British Columbia from 2016 to 2021:

- Kelowna +14% to 222,162
- Chilliwack +12.1% to 113,767
- Nanaimo +10.0% to 115,459
- Kamloops +10% to 114,142

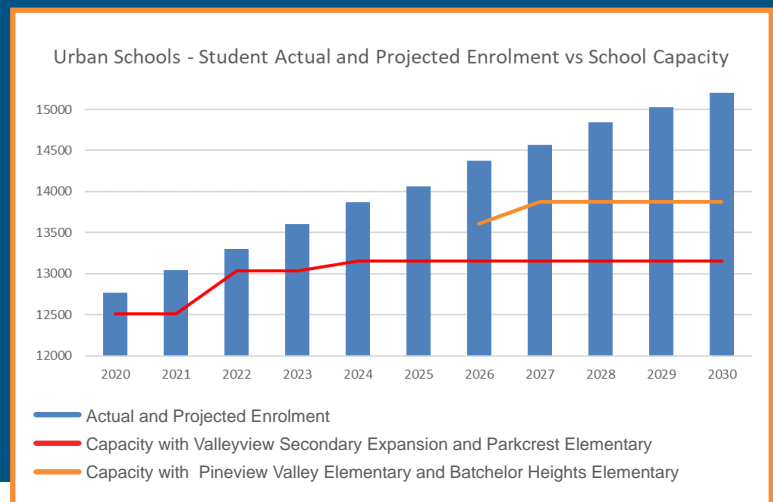


By 2026, 67% of SD73 schools will be over 100% capacity, with 30% of urban schools over 149% capacity

School capital investments create better neighbourhoods and communities.

Based on future enrolment projections, we expect to see growth throughout the District over the next 10 years to be between 17,000 and 17,400 students.

The Board has managed student growth with the strategic placement of portable classroom spaces and many catchment changes. Many specialized rooms have been converted to classroom spaces resulting in the loss of multipurpose rooms and dedicated LART rooms in many schools. However, portables do not increase spaces for gym, art, library, or washrooms, nor does it provide flex spaces for student support such as one-on-one or small group work.



URBAN SCHOOLS

—Student Actual and Projected Enrolment vs School Capacity
 School capacity increases with the construction of the Valleyview Secondary School expansion (2022); Parkcrest Elementary rebuild (2024); new school in Pineview Valley (2026) and new school in Batchelor Heights (2027)

When you look at our urban schools, **our enrolment growth exceeded our capacity** in 2020 by 102% and will continue to exceed our capacity by 121% in 2030.

Portable classrooms take away space from fields and parking, and limit access for school buses, daycare vans, and emergency vehicles.

We have many pressing needs.

The Board of Education has identified **6 key priorities** in the District's 2021–22 and 2022–2023 Capital Plans.*

Enrolment growth in the southwest sector of the City of Kamloops is the fastest within School District No. 73 compared to capacity of the surrounding elementary schools (Pacific Way, Aberdeen, Dufferin and McGowan Park). On average, enrolment is projected to grow to 468 students over the next five years and 620 students in the next ten years. A new school in Pineview Valley is currently supported by the Ministry of Education and Child Care. If this school were to open in 2026, continued enrolment projections to 2031 predict the southwest sector will be 500 students over capacity.

NEED: A New School Pineview Valley Elementary School

PROJECTED COST* — \$60 M

*Based on the June 2022 Capital Plan

PRIORITY

1



Current Capacity

140%

Projected Capacity (2025)
after catchment redistribution

150%

Westmount Elementary School serves the Westmount and Batchelor Heights areas of Kamloops. For the 2021–2022 school year it was at 181% capacity. Of the 364 students enrolled for the 2021–2022 school year, 149 students were learning in portables, which was 41% of the school's population. For the 2022–2023 school year, the District implemented a catchment change to shift students living in the Batchelor Heights community to both David Thompson Elementary and Westsyde Elementary to more evenly balance the capacity utilization between the schools. The District is providing two temporary transportation routes for approximately 100 students from the Batchelor community to these alternate elementary schools and outside of their current neighbourhoods while the Board of Education advocates for a new school from the Ministry of Education and Child Care. Even with these significant catchment changes, Westmount Elementary school continues to be over capacity with no dedicated special programming spaces within the school.

NEED: A New School Batchelor Heights Elementary School

PROJECTED COST* — \$39 M

*Based on the June 2022 Capital Plan

PRIORITY

2



BEFORE CATCHMENT CHANGE

School	Current Capacity Utilization	Projected Capacity Utilization (2027)
Westmount Elementary	181%	174%
Westsyde Elementary	74%	78%
David Thompson Elementary	74%	71%

AFTER CATCHMENT CHANGE

School	Current Capacity Utilization	Projected Capacity Utilization (2027)
Westmount Elementary	124%	103%
Westsyde Elementary	95%	80%
David Thompson Elementary	95%	93%

*Disclaimer: This report, including the data and information contained in this report, is provided to demonstrate enrolment pressures in the Kamloops-Thompson School District. Priority order of new schools contained within this document have been submitted to the Ministry of Education and Child Care in both the 2021–2022 and 2022–2023 Five Year Capital Plan submissions. At this time, the District has received Ministry support for a new school in Pineview Valley and Batchelor Heights, however, we have yet to receive a funding agreement.

Top 6 Priorities

CONTINUED



SCHOOL DISTRICT NO. 73
(Kamloops-Thompson)

On average, in the southwest sector alone, enrolment is projected to grow at **468 students** over the next **five years** and **620 students** in the next **ten years**.

PRIORITY

3

The south shore secondary schools in Kamloops have seen significant enrolment growth and this trend is expected to continue. **Sa-Hali Secondary**, the closest secondary school to Aberdeen, is currently at 141% capacity despite the catchment changes in the spring of 2022. In addition to the catchment change, the District moved its Data program to an alternate secondary school and capped its International Student Program enrolment to 30 students. Sa-Hali's capacity utilization is projected to return to 146% by 2025. Of the 1021 students currently enrolled, 168 students are learning in portables.

NEED:

Aberdeen Secondary School

PROJECTED COST* — \$100 M

*Based on the June 2022 Capital Plan



BEFORE CATCHMENT CHANGE

School	Current Capacity Utilization	Projected Capacity Utilization (2027)
Sa-Hali Secondary School	137%	146%

AFTER CATCHMENT CHANGE

School	Current Capacity Utilization	Projected Capacity Utilization (2027)
Sa-Hali Secondary School	141%	146%

PRIORITY

4

Enrolment pressures in Juniper Ridge necessitated the re-opening of Ralph Bell in September 2022. To mitigate enrolment pressure, the District is providing two additional school bus runs to transport approximate 130 students out of their neighbourhood. While the re-opening of Ralph Bell Elementary has temporarily reduced enrolment pressure for **Juniper Ridge Elementary** and Marion Schilling Elementary, Juniper Ridge Elementary will return to 112% capacity utilization by 2030.

NEED: A New School

Juniper Ridge West Elementary School

PROJECTED COST* — \$40 M

*Based on the June 2022 Capital Plan



BEFORE CATCHMENT CHANGE

School	Current Capacity Utilization	Projected Capacity Utilization (2027)
Juniper Ridge Elementary	156%	118%
Marion Schilling Elementary	96%	129%
Ralph Bell Elementary		

AFTER CATCHMENT CHANGE

School	Current Capacity Utilization	Projected Capacity Utilization (2027)
Juniper Ridge Elementary	141%	124%
Marion Schilling Elementary	72%	122%
Ralph Bell Elementary	114%	132%

Sun Peaks Resort Municipality is the fastest growing municipality in the province of BC, with its population doubling in the second five-year period in a row. **Sun Peaks School** services Kindergarten to grade 9 students in a collection of portables and leased space in a hotel conference center. 100% of students are in these temporary spaces that leaves no room for sensory rooms, small group intervention spaces, and library. Future growth requires a new school, sports fields, and appropriate playground spaces.

PRIORITY
5



NEED: A New School
Sun Peaks Community School

PROJECTED COST*— **\$60 M**
*Based on the June 2022 Capital Plan

Current Capacity	Projected Capacity (2025) after catchment redistribution
120%	126%

According to the City of Kamloops Official Community Plan, the southwest sector is the fastest growing area within Kamloops. Four elementary schools serve this area. A recent catchment change in the spring of 2022 for Aberdeen Elementary and Pacific Way Elementary will balance enrolment pressure between the two schools. Further significant growth is projected for Pacific Way Elementary, which will result in significant over capacity issues at Pacific Way Elementary.

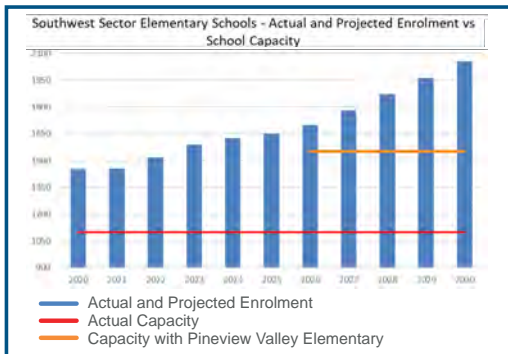
PRIORITY
6



NEED:
Aberdeen East Elementary School

PROJECTED COST*— **\$39 M**
*Based on the June 2022 Capital Plan

BEFORE CATCHMENT CHANGE		
School	Current Capacity Utilization	Projected Capacity Utilization (2027)
Aberdeen Elementary	111%	124%
Pacific Way Elementary	134%	175%
AFTER CATCHMENT CHANGE		
School	Current Capacity Utilization	Projected Capacity Utilization (2027)
Aberdeen Elementary	128%	146%
Pacific Way Elementary	103%	160%



SOUTHWEST SECTOR ELEMENTARY SCHOOLS
—Actual and Projected Enrolment vs School Capacity

This graph depicts enrolment growth compared to capacity of the southwest sector elementary schools (Pacific Way, Aberdeen, Dufferin and McGowan Park). On average, enrolment is projected to grow by 468 students over the next five years and 620 students in the next ten years. With this speed of enrolment growth, current capacity at these four elementary schools is not adequate to accommodate the growth in students. The average capacity utilization for these four schools is currently 144% and is projected to increase to 187% by 2030. Priority one and six listed above and on the preceding pages address these enrolment challenges. Southwest sector schools' capacity increases in 2026 with the construction of a new school in Pineview Valley.

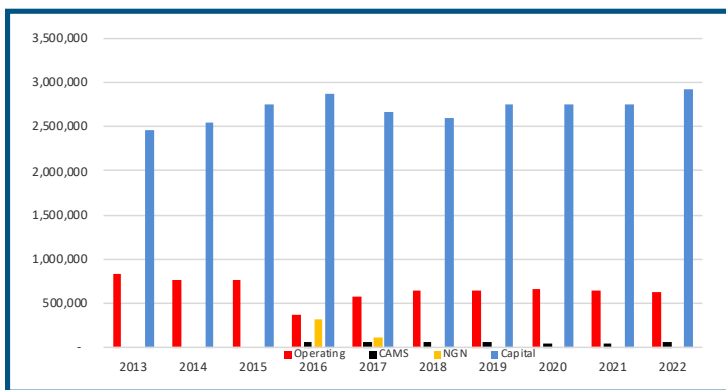
Overcrowded and aging facilities.



Including the expansion of Valleyview Secondary, the District maintains 2,300,000 sqft of space.

School buildings are considered to have a useful life of approximately 60 years. Currently, approximately 87% of the District’s school buildings are over 40 years old and 58% are over 50 years old. This means that a large portion of SD73’s school buildings will be at the end of their useful lives in 10–20 years. The District has a long history of using all available funding for maintenance upgrades of its schools to the highest extent possible. As a result, SD73’s buildings are in good condition relative to their age. However, the age of the buildings are resulting in additional maintenance cost pressures and the available funding is not keeping up with costs.

The Ministry of Education provides operating and capital funding for facility improvements to District facilities through the Annual Facility Grant. Including the expansion of Valleyview Secondary, the District maintains 2,300,000 sqft of space. On average, between 2013 and 2022, the Annual Facility Grant has increased 0.86% over the last 10 years with the inclusion of the Ministry’s Capital Asset Management System (CAMS) and the implementation of the Next Generation Network (NGN) within the Annual Facility Grant funds. In 2003, the Annual Capital Grant for SD73 was \$3,113,329, compared to \$3,539,791 in 2022 which is a 13.7% increase in 20 years. The inflation rate for the same time period is 44.5%. While the Annual Facility Grant funding has not kept pace with inflation, the Ministry of Education has provided funding for larger capital items such as HVAC and Dust Collection Systems under the School Enhancement Program, along with funding for Carbon Neutral Capital Projects such as Boiler upgrades and Electric Bus Charging Stations.



ANNUAL FACILITY GRANT
—Operating and Capital Funding

Schools are relied upon as neighbourhood and community resources providing space for:

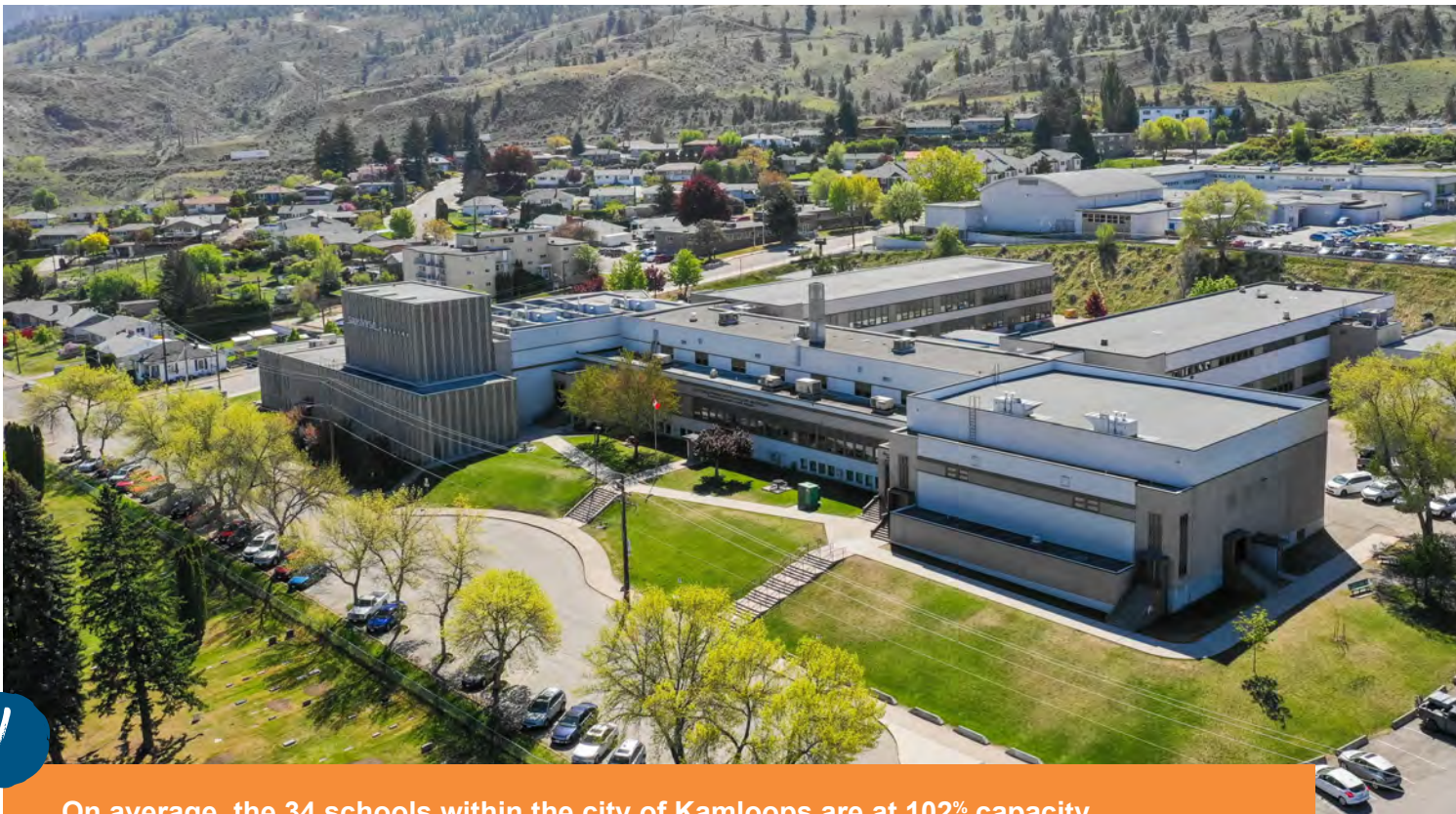
- Preschools
- Seniors programs
- Brownies
- Power Up program
- Childcare
- Cub Scouts
- Worry Dragons

These programs are needed to support **positive social-emotional growth and wellbeing of the community**. Our increasing enrolment pressures do not enable students to benefit from these programs.

Schools are community assets.

Schools are central to our neighbourhoods and help to **define the character** of our cities and communities.

As per the District's Capital Plan, **SD73 requires capital funding for projects** to alleviate pressure caused from growth and over-enrolment in several areas of the District. These projects are required urgently, as such projects take several years to design and construct. Without new schools, students lose educational programming during the day and the community loses programming opportunities after school.



On average, the 34 schools within the city of Kamloops are at 102% capacity



5,000 students bused 9,000 km/day

Urban areas have limited walkability.

Our District's geography, spanning 27,000 sq kms, precludes busing children from overcrowded schools to schools where classroom space exists. Busing children to rural communities means students would have daily commutes in excess of two hours per day. This is not an option for students in our District.

In areas where there is student enrolment pressure, the transportation system also has full or near-full bus routes. **Enrolment growth means the District will need seven new buses and routes in the next five years.** We will not be able to store these buses in our current transportation facility which is currently at capacity.



Have your say at SD73 Connects

Education is important to all of us, and we are interested in what you have to say about what is going on in the District now and what we should be planning for.



● sd73connects.ca