



SCHOOL DISTRICT NO. 73
(Kamloops-Thompson)

OVERVIEW SNÍNE ELEMENTARY CATCHMENT CHANGE CONSULTATION WEBINAR

DECEMBER 4, 2024

Today



- **Purpose:** To review the proposed catchment changes due to the opening of Sníne Elementary School and to gather feedback and questions.
- **Goals:** To listen to feedback and questions and to respond with any necessary changes to the catchment change plan.
- **Outcome:** To share your feedback and questions as well as proposed responses with the Board of Education to enable the Board to make a decision about a catchment change by May-June 2025.



RATIONALE



We have a Board of Education comprised of 9 elected School Trustees.

In Board Policy 2,

The Board of Education is responsible for catchment changes and grade reconfigurations, and for community engagement as outlined in Administrative Procedure 135: Reconfiguration of Schools.



RECONFIGURATION OF SCHOOLS



In Administrative Procedure 135: Reconfiguration of Schools, **meaningful community engagement** is required when a reconfiguration of schools and potential catchment change.

4.3 During the public engagement the Superintendent will provide the parent/school community with the following:

4.3.1 The **issue** under consideration

4.3.2 The **objectives and criteria** for considering the reconfiguration

4.3.3. **Options** being considered and supporting information

4.3.4. **Process for school community engagement**



THE ISSUE



Administrative Procedure 135: Reconfiguration of Schools

4.3 During the public engagement, the Superintendent will provide the parent/school community with the following:

4.3.1 The issue under consideration: We expect to open a new Sníne Elementary in September 2026, which means that we require students to be relocated through a catchment change process.



OBJECTIVES OF THE CATCHMENT CHANGES



- To create a catchment area for Sníne Elementary
- With the additional space created by the new school, reduce space pressures at neighboring school where possible



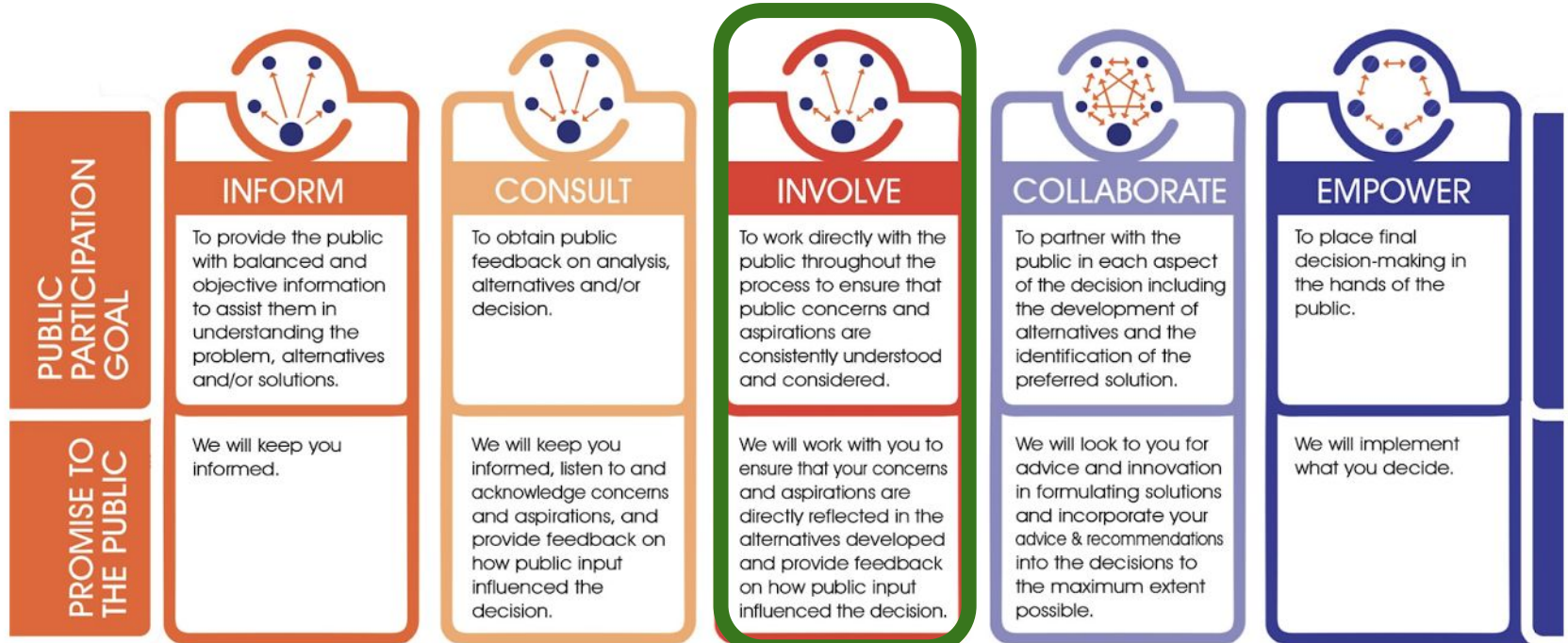
CRITERIA OF THE CATCHMENT CHANGES



- Consider feedback and respond to it.
- Communicate with those who will be impacted.
- Reassure families impacted by the catchment changes well in advance.
- Work with school administrators to communicate consistent messages with families.
- Maintain the current practice of each elementary school feeding into only one secondary school



PUBLIC SPECTRUM OF COMMUNITY ENGAGEMENT



INCREASING IMPACT ON THE DECISION

APPROACH TO COMMUNITY ENGAGEMENT



WHEN WILL A DECISION BE MADE?

Our goal is to present final catchment change options to the Board in May-June 2025.

HOW WILL PARENTS AND STAFF LEARN ABOUT CATCHMENT CHANGES?

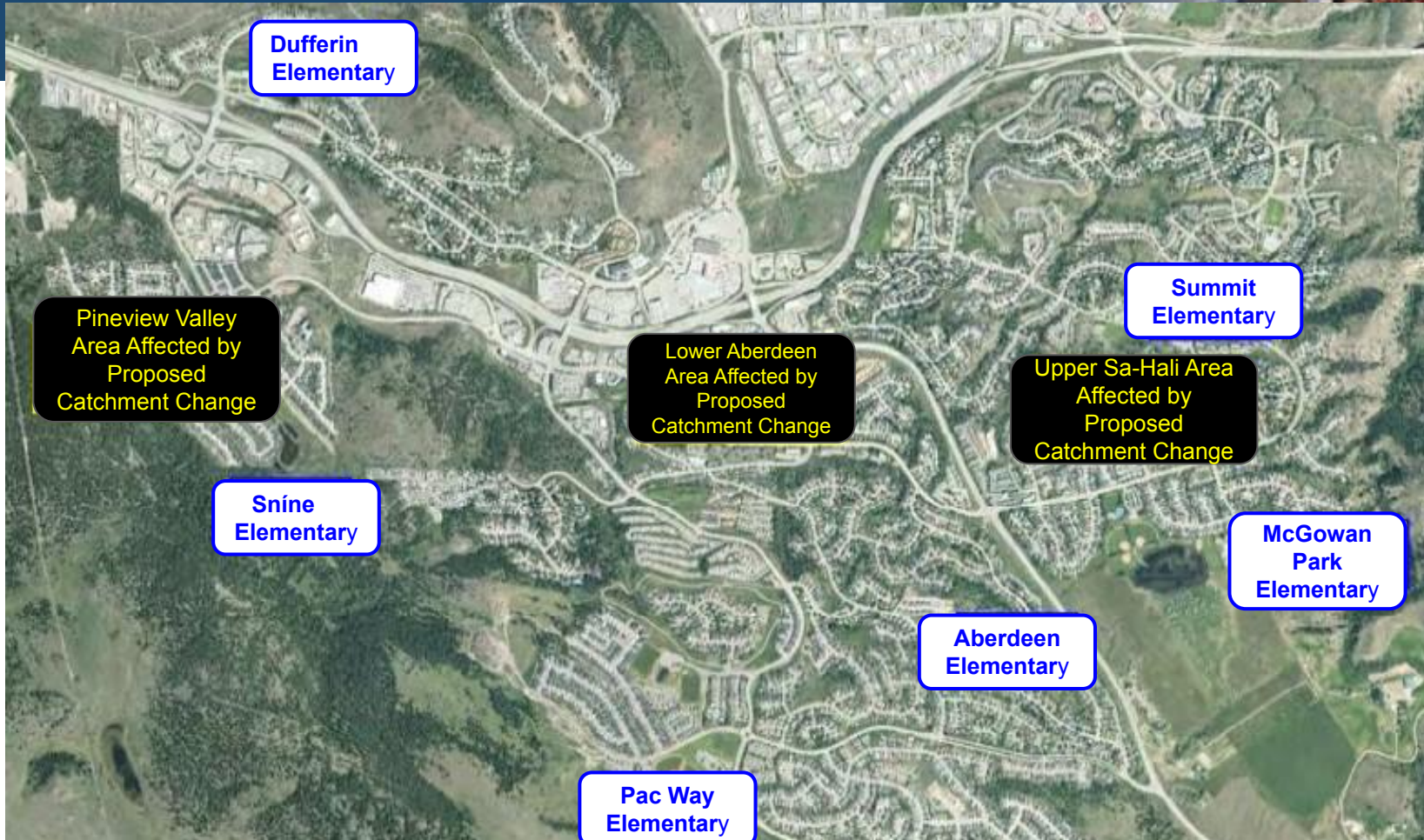
We will send communication to each family impacted, all staff and parents in the district and provide updates on our website.

PROPOSED NEW CATCHMENT AREAS



- Proposed catchment area changes as shown on the following maps:
 - **Pineview Valley** moves from **McGowan Park Elementary** to **Sníne Elementary**
 - **A portion of Aberdeen Elementary** moves to **Sníne Elementary** and from **South Kamloops Secondary** to **Sa-Hali Secondary**
 - **A portion of Summit Elementary** moves to **McGowan Park Elementary**
 - **A portion of Dufferin Elementary** moves to **Sníne Elementary** and from **South Kamloops Secondary** to **Sa-Hali Secondary**
 - **A portion of Savona Elementary** moves to **Sníne Elementary** and from **South Kamloops Secondary** to **Sa-Hali Secondary**

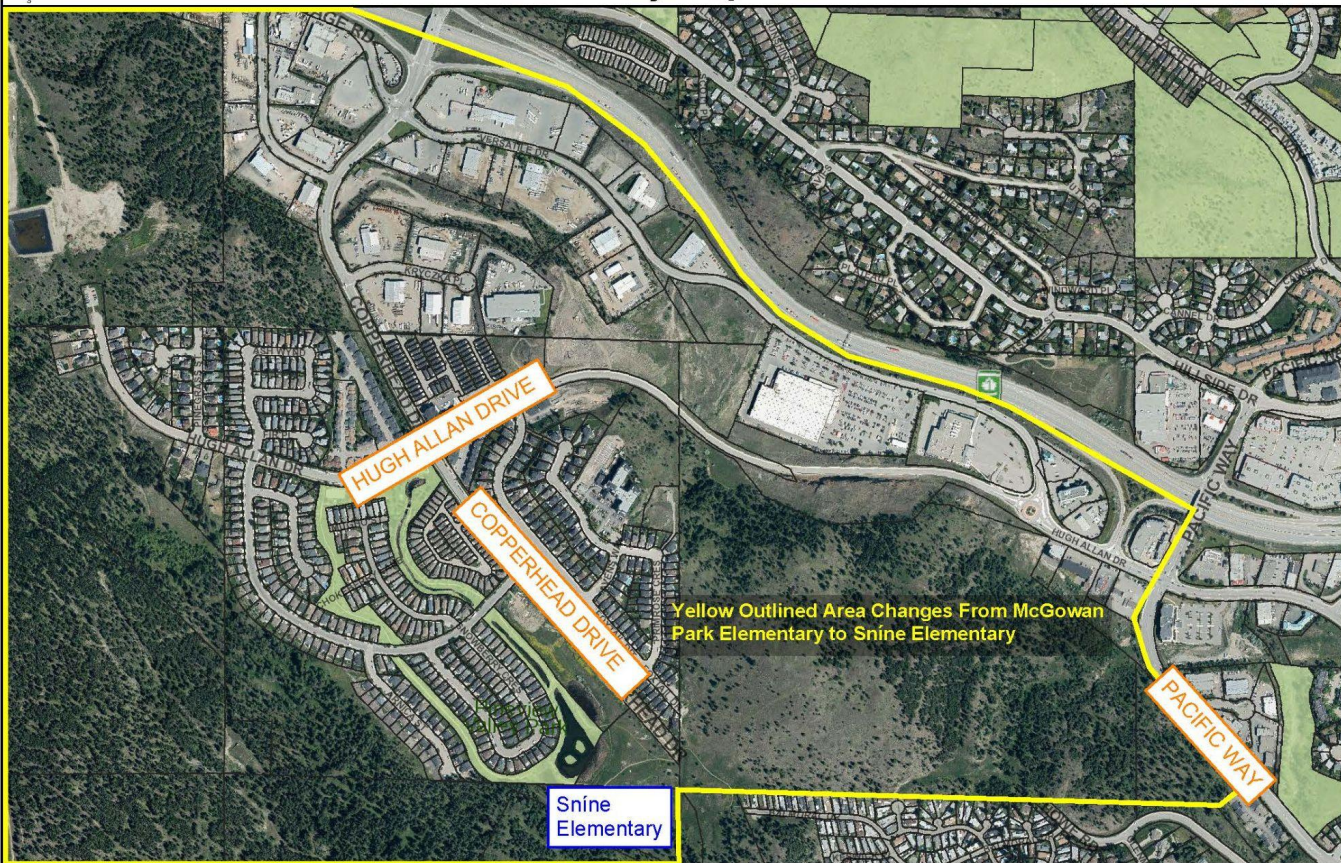
CATCHMENT CHANGE OPTION





City Map

Date Created: Aug 07, 2024



The City of Kamloops does not guarantee the location or depth of the utilities as shown on our drawings. Prior to commencing any mechanical ground disturbance work, the location of all underground utilities must be confirmed by hand digging or hydro excavating. The City of Kamloops does not accept any liability or responsibility for errors or omissions.

0 145 290 580

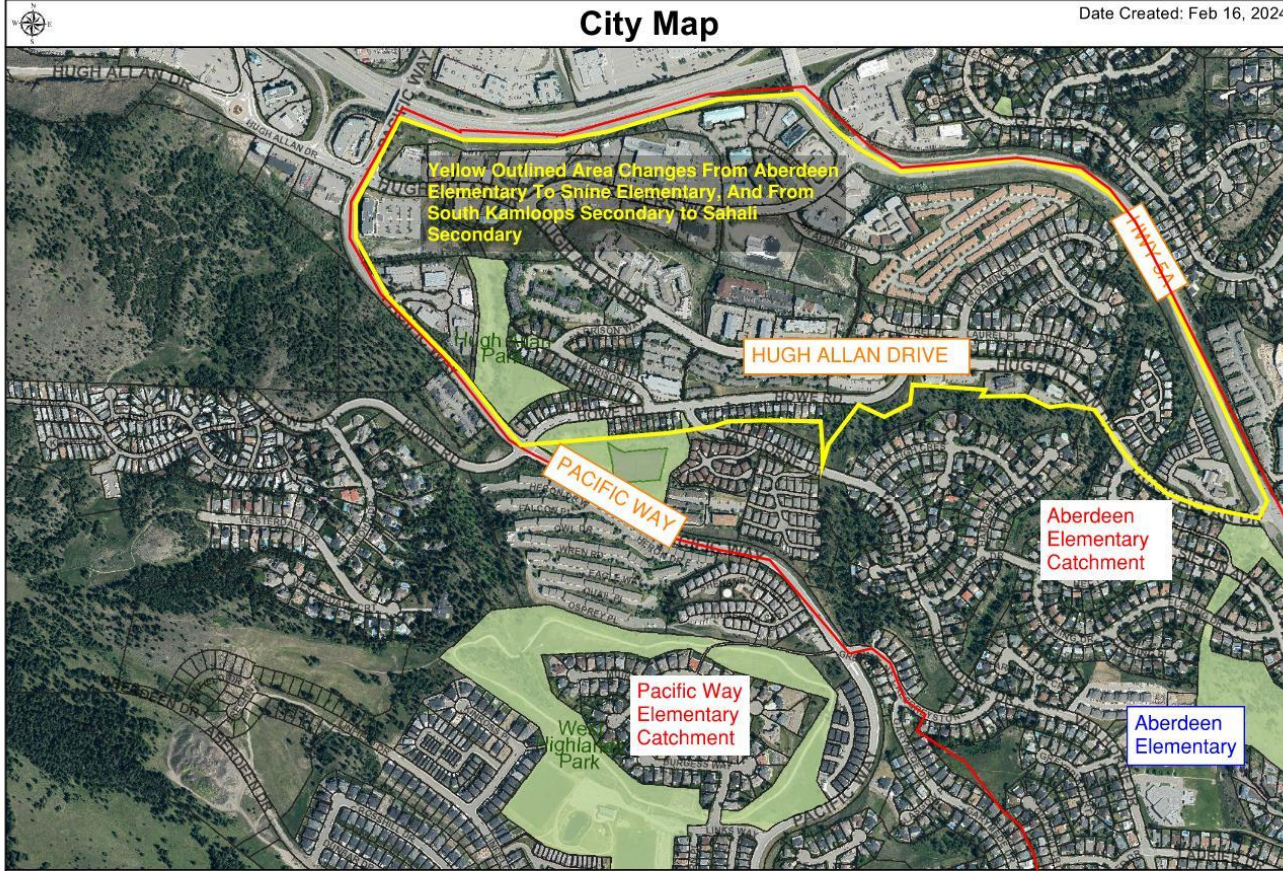


m
1:9,028

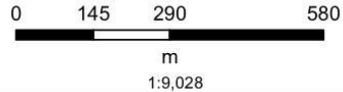
Author: City of Kamloops

City Map

Date Created: Feb 16, 2024

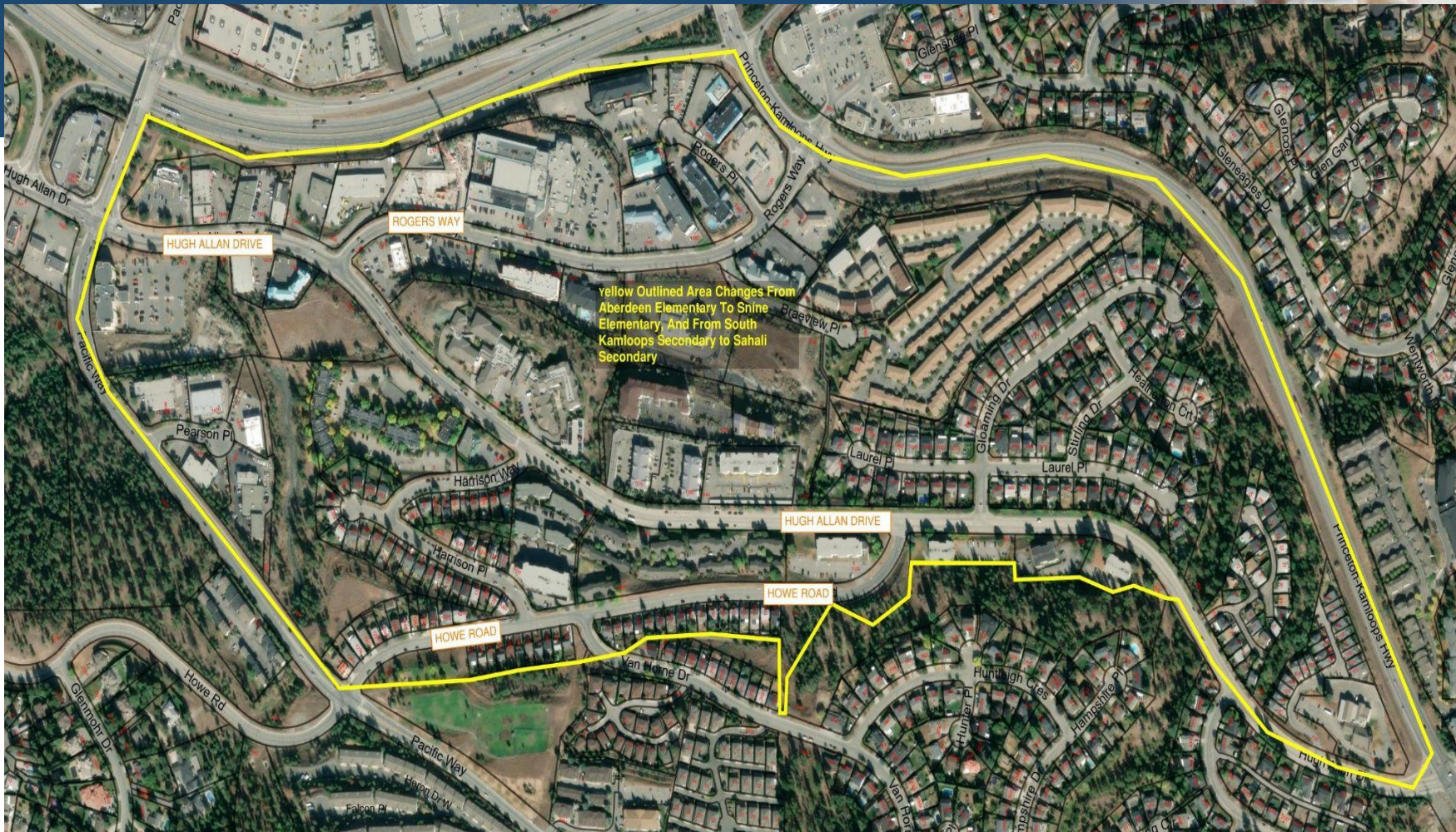


The City of Kamloops does not guarantee the location or depth of the utilities as shown on our drawings. Prior to commencing any mechanical ground disturbance work, the location of all underground utilities must be confirmed by hand digging or hydro excavating. The City of Kamloops does not accept any liability or responsibility for errors or omissions.



Author: City of Kamloops



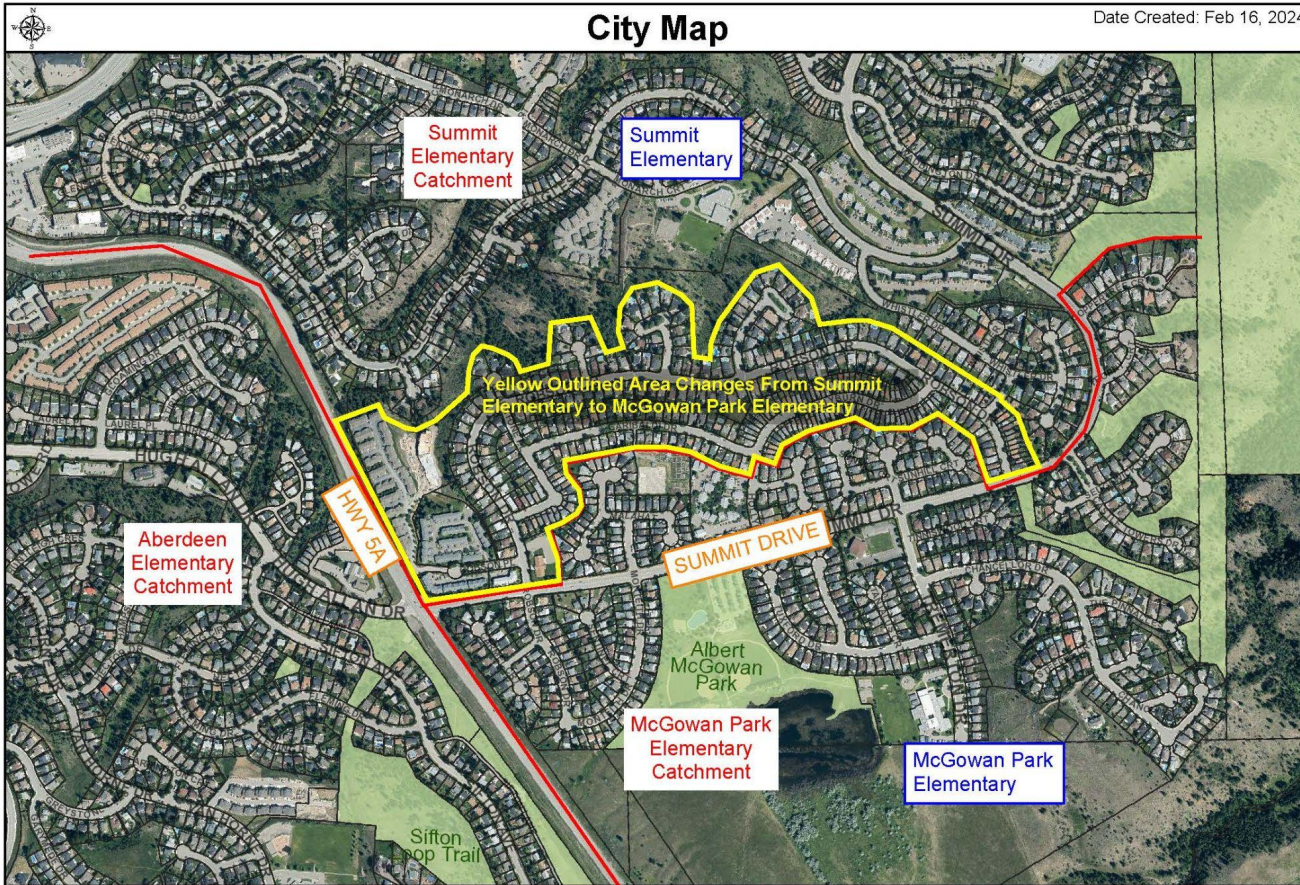


Yellow Outlined Area Changes From Aberdeen Elementary To Snine Elementary, And From South Kamloops Secondary To Sahali Secondary



City Map

Date Created: Feb 16, 2024



The City of Kamloops does not guarantee the location or depth of the utilities as shown on our drawings. Prior to commencing any mechanical ground disturbance work, the location of all underground utilities must be confirmed by hand digging or hydro excavating. The City of Kamloops does not accept any liability or responsibility for errors or omissions.

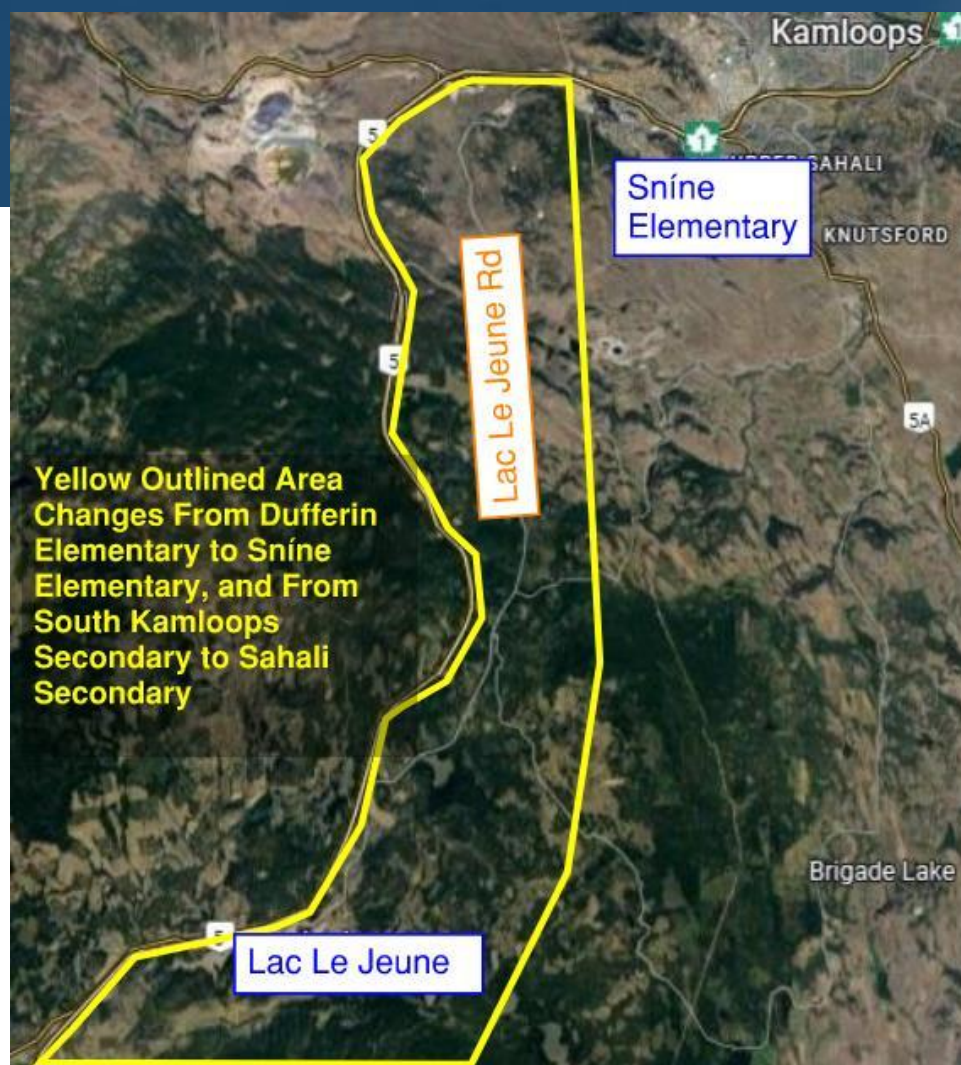


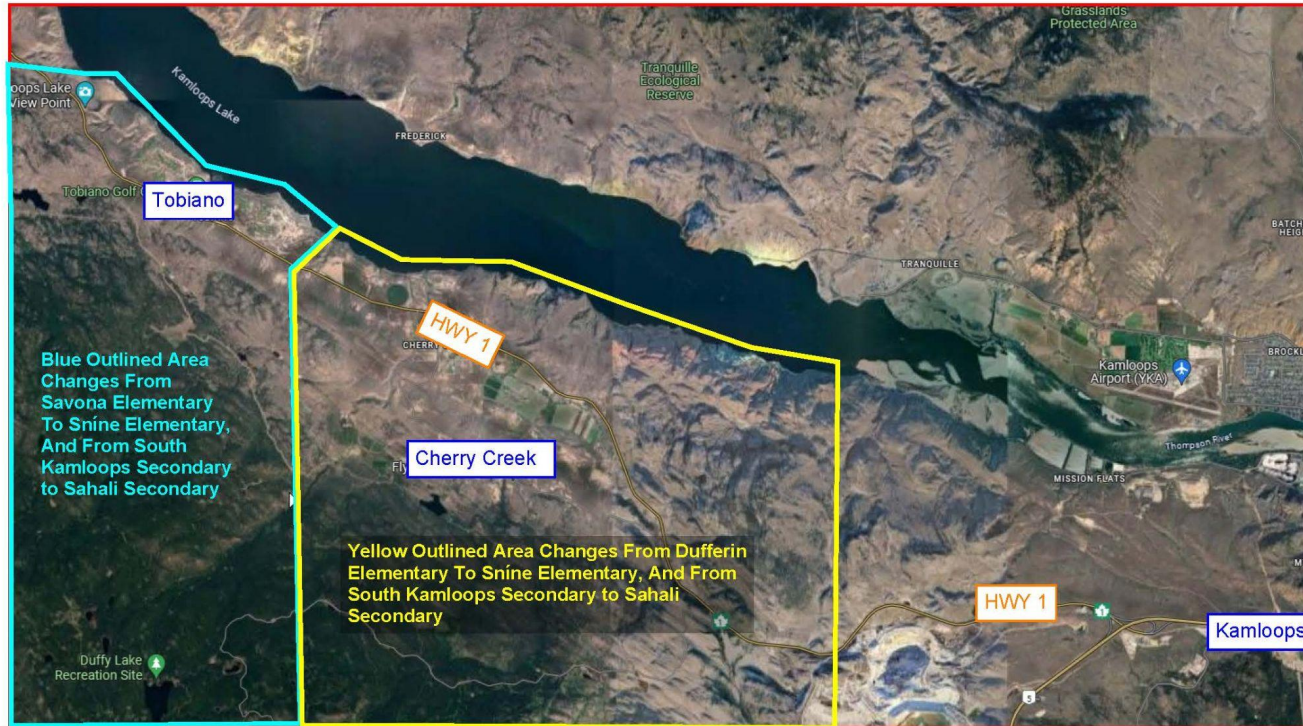
1:9,028

Author: City of Kamloops









- According to Baragar data, 0 students from Tobiano are attending Savona Elementary

ENROLMENT PROJECTION ASSUMPTIONS



- 2026 Grade 7s and their siblings stay at current school, with all other students attending their new catchment school.
- 2026 Grade 12s and their siblings stay at current school, with all other students attending their new catchment school.
- Students attending Schools of Choice stay at current school.

ENROLMENT PROJECTIONS - CURRENT CATCHMENT AREAS (No Change)

<u>Current Catchment Areas</u>													
	Grades	Ministry Operating Capacity	Enrolment		Projected Enrolment								
			2023	2024	2025	2026	2027	2028	2029	2030	2031	2032	2033
Aberdeen Elementary	K-7	383	506	513	522	539	542	544	534	525	519	521	513
Dufferin Elementary	K-7	178	270	274	280	283	275	271	281	280	273	270	272
McGowan Park Elementary	K-7	267	426	424	420	415	425	444	488	520	563	611	648
Snine Elementary	K-7	453	0	0	0	0	0	0	0	0	0	0	0
Summit Elementary	K-7	271	319	320	340	345	345	334	340	324	320	323	328
Sahali Secondary	8-12	725	951	961	933	953	976	1044	1078	1139	1188	1204	1213
South Kamloops Secondary	8-12	975	1068	1124	1156	1148	1171	1188	1183	1217	1260	1253	1258
Total		3,252	3,540	3,616	3,651	3,683	3,734	3,825	3,904	4,005	4,123	4,182	4,232
Aberdeen Elementary	K-7	383	132%	134%	136%	141%	142%	142%	139%	137%	136%	136%	134%
Dufferin Elementary	K-7	178	152%	154%	157%	159%	154%	152%	158%	157%	153%	152%	153%
McGowan Park Elementary	K-7	267	160%	159%	157%	155%	159%	166%	183%	195%	211%	229%	243%
Snine Elementary	K-7	453	0%	0%	0%	0%	0%	0%	0%	0%	0%	0%	0%
Summit Elementary	K-7	271	118%	118%	125%	127%	127%	123%	125%	120%	118%	119%	121%
Sahali Secondary	8-12	725	131%	133%	129%	131%	135%	144%	149%	157%	164%	166%	167%
South Kamloops Secondary	8-12	975	110%	115%	119%	118%	120%	122%	121%	125%	129%	129%	129%

ENROLMENT PROJECTIONS - PROPOSED NEW CATCHMENT AREAS



Proposed New Catchment Areas

	Grades	Ministry Operating Capacity	Enrolment 2023	2024	2025	2026	Projected Enrolment						
							2027	2028	2029	2030	2031	2032	2033
Aberdeen Elementary	K-7	383	506	513	522	500	500	502	491	482	476	478	470
Dufferin Elementary	K-7	178	270	274	280	201	174	169	178	175	167	164	166
McGowan Park Elementary	K-7	267	426	424	420	297	279	276	274	253	243	239	231
Snine Elementary	K-7	453	0	0	0	297	355	379	428	485	540	592	637
Summit Elementary	K-7	271	319	320	340	287	279	267	272	254	249	252	257
Sahali Secondary	8-12	725	951	961	933	992	1035	1103	1137	1198	1247	1263	1272
South Kamloops Secondary	8-12	975	1068	1124	1156	1109	1113	1129	1124	1158	1201	1194	1199
Total		3,252	3,540	3,616	3,651	3,683	3,735	3,825	3,904	4,005	4,123	4,182	4,232
Aberdeen Elementary	K-7	383	132%	134%	136%	131%	131%	131%	128%	126%	124%	125%	123%
Dufferin Elementary	K-7	178	152%	154%	157%	113%	98%	95%	100%	98%	94%	92%	93%
McGowan Park Elementary	K-7	267	160%	159%	157%	111%	104%	103%	103%	95%	91%	90%	87%
Snine Elementary	K-7	453	0%	0%	0%	66%	78%	84%	94%	107%	119%	131%	141%
Summit Elementary	K-7	271	118%	118%	125%	106%	103%	99%	100%	94%	92%	93%	95%
Sahali Secondary	8-12	725	131%	133%	129%	137%	143%	152%	157%	165%	172%	174%	175%
South Kamloops Secondary	8-12	975	110%	115%	119%	114%	114%	116%	115%	119%	123%	122%	123%

PROPOSED NEW CATCHMENT AREAS



2026-2027 Capacity Utilization Projections Summary

	Current Configuration	Proposed Configuration
Aberdeen Elementary	141%	131%
Dufferin Elementary	159%	113%
McGowan Park Elementary	155%	111%
Sníne Elementary	0%	66%
Summit Elementary	127%	106%
Sa-Hali Secondary	131%	137%
South Kamloops Secondary	118%	114%

PROPOSED NEW CATCHMENT AREAS



2033-2034 Capacity Utilization Projections Summary

	Current Configuration	Proposed Configuration
Aberdeen Elementary	134%	123%
Dufferin Elementary	153%	93%
McGowan Park Elementary	243%	87%
Sníne Elementary	0%	141%
Summit Elementary	121%	95%
Sa-Hali Secondary	167%	175%
South Kamloops Secondary	129%	123%

PROPOSED NEW CATCHMENT AREAS



- **Positives**

- Slightly reduces the over-capacity issue at Aberdeen Elementary
- Significantly reduces the over-capacity issue at Dufferin Elementary
- Significantly reduces the over-capacity issue at McGowan Park Elementary
- Reduces over-capacity issue at Summit Elementary

- **Negatives**

- Increases the significant over-capacity issue at Sa-Hali Secondary
- Increases enrolment at Sníne Elementary to where Sníne Elementary will be overcrowded in several years, and it is difficult to add portables to this site due to the topography

RELATED KEY INFORMATION



Transportation

- Elementary bus routes out of Pineview Valley will be discontinued for September 2026
- Busing will be provided in accordance with Board Policy 17: Transportation of Students and Administrative Procedure 560 Student Transportation
- Based on the proposed catchment changes, the following route changes will be made for September 2026
 - Routes from Cherry Creek, Tobiano & Lac Le Jeune will include drop off at Sníne Elementary. This will be in addition to the schools they currently serve. This will add about 5 minutes to each route in the morning and the afternoon.
 - We will modify an existing route to transport elementary students living between Pacific Way Drive and Hwy 5A (current Aberdeen students affected by the proposed change) to Sníne Elementary

ALTERNATE CATCHMENT CHANGE OPTION



An alternate change was considered:

- In addition to the proposed catchment changes above, this alternate catchment change includes relocating the Montessori Program from Aberdeen Elementary to Sníne Elementary.
- Based on 2023-2024 enrolments, 120 students would be moved to Sníne Elementary.
- Montessori has approximately 20 students per grade and their secondary school would change from South Kamloops Secondary to Sa-Hali Secondary.

ALTERNATE CATCHMENT CHANGE OPTION - Also Includes Moving Montessori Program



Proposed New Catchment Areas - Includes Relocating Montessori Program

	Grades	Ministry Operating Capacity	Enrolment 2023	2024	2025	2026	Projected Enrolment						
							2027	2028	2029	2030	2031	2032	2033
Aberdeen Elementary	K-7	383	506	513	522	381	381	383	372	363	357	359	351
Dufferin Elementary	K-7	178	270	274	280	201	174	169	178	175	167	164	166
McGowan Park Elementary	K-7	267	426	424	420	297	279	276	274	253	243	239	231
Snine Elementary	K-7	453	0	0	0	416	474	498	547	604	659	711	756
Summit Elementary	K-7	271	319	320	340	287	279	267	272	254	249	252	257
Sahali Secondary	8-12	725	951	961	933	1012	1075	1163	1217	1298	1347	1363	1372
South Kamloops Secondary	8-12	975	1068	1124	1156	1089	1073	1069	1044	1058	1101	1094	1099
Total													
Aberdeen Elementary	K-7	383	132%	134%	136%	99%	99%	100%	97%	95%	93%	94%	92%
Dufferin Elementary	K-7	178	152%	154%	157%	113%	98%	95%	100%	98%	94%	92%	93%
McGowan Park Elementary	K-7	267	160%	159%	157%	111%	104%	103%	103%	95%	91%	90%	87%
Snine Elementary	K-7	453	0%	0%	0%	92%	105%	110%	121%	133%	146%	157%	167%
Summit Elementary	K-7	271	118%	118%	125%	106%	103%	99%	100%	94%	92%	93%	95%
Sahali Secondary	8-12	725	131%	133%	129%	140%	148%	160%	168%	179%	186%	188%	189%
South Kamloops Secondary	8-12	975	110%	115%	119%	112%	110%	110%	107%	109%	113%	112%	113%

ALTERNATE CATCHMENT CHANGE OPTION



2026-2027 Capacity Utilization Projections Summary

	Current Configuration	Proposed Configuration	Alternate Configuration
Aberdeen Elementary	141%	131%	99%
Dufferin Elementary	159%	113%	113%
McGowan Park Elem	155%	111%	111%
Sníne Elementary	0%	66%	92%
Summit Elementary	127%	106%	106%
Sa-Hali Secondary	131%	137%	140%
South Kamloops Sec	118%	114%	112%

ALTERNATE CATCHMENT CHANGE OPTION



2033-2034 Capacity Utilization Projections Summary

	Current Configuration	Proposed Configuration	Alternate Configuration
Aberdeen Elementary	134%	123%	92%
Dufferin Elementary	153%	93%	93%
McGowan Park Elem	243%	87%	87%
Sníne Elementary	0%	141%	167%
Summit Elementary	121%	95%	95%
Sa-Hali Secondary	167%	175%	189%
South Kamloops Sec	129%	123%	113%

ALTERNATE CATCHMENT CHANGE OPTION



- **Positives**

- Significantly reduces the over-capacity issue at Aberdeen Elementary
- Significantly reduces the over-capacity issue at Dufferin Elementary
- Significantly reduces the over-capacity issue at McGowan Park Elementary
- Reduces over-capacity issue at Summit Elementary

- **Negatives**

- Increases the significant over-capacity issue at Sa-Hali Secondary
- Relocates a program that is well grounded at Aberdeen Elementary
- Increases enrolment at Sníne Elementary to where Sníne Elementary will be overcrowded quickly, and it is difficult to add portables to this site due to the topography

Feedback - Themes



- **Sa-Hali Secondary remains overcapacity** and discussion was about how to manage over-capacity issues over the next 5-8 years, assuming we are supported for a new school in Aberdeen within the next 2 years.
- **Sníne Elementary is on a small, topographically-challenging site**, so we have to be mindful of future growth when planning this catchment change.
- **Aberdeen Elementary does not see a significant reduction in enrolment** based on the proposed catchment change. The Montessori alternative catchment change will likely not result in the projected enrolment reductions at Aberdeen Elementary because many parents indicated they would have their children remain at Aberdeen Elementary even if the Montessori program were to move. It would cause significant over-capacity at Sníne Elementary and Sa-Hali Secondary.

Feedback - Themes



- **Several similar new suggestions have been made on how to reduce the overcapacity issue at Aberdeen Elementary**, mainly having the Knutsford area elementary students moved from Aberdeen Elementary to McGowan Park Elementary. Although this will reduce the enrolment at Aberdeen Elementary, this further increases the significant over-capacity issue at Sa-Hali Secondary.
- **Impacts on bus ride times**, particularly for the rural students needs to be considered and reviewed.
- **Some schools supported staying at their current capacity utilization** to preserve their current community.
- **Summit parents requested consideration** of reducing the size of the proposed catchment change area to go to McGowan Park, which could potentially balance capacity at both schools and reduce commuting challenges.

Communication Tools

Dedicated website with weekly updates- thematic results and FAQs with an email to provide feedback ([LINK](#))

Community-specific invitations to take part in community engagement session (presentation- to share feedback and to document their feedback).

Community-specific report back on themes from their feedback following their session.

Community-specific report back through school principals and PAC Chairs on any additional feedback.

Superintendent's Update- share where to find updates and provide feedback.

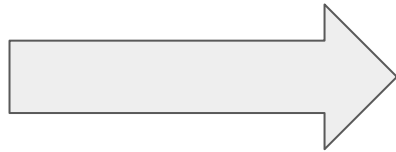
Social Media- post where to find updates and provide feedback.

To submit questions after the session,

Go to the SD73 Website

www.sd73.bc.ca

And click on the box that looks like this
(Under the homepage scrolling banner)



As the Board prepares to open Sníne Elementary in 2026, we are engaging in consultation to review the proposed catchment changes and to gather feedback and questions.



New School - Sníne Elementary School (K-7) Opens in the Fall 2026



Share your feedback and questions about Sníne Elementary catchment changes with the Board of Education.

Frequently Asked Questions and Answers

Explore the Frequently Asked Questions and Answers [here](#).

If you have further questions or feedback, please email us [here](#).



As the Board of Education prepares for the opening of Sníne Elementary School (K-7) in the Fall of 2026, we are engaging in community consultation to review the proposed catchment changes and to gather feedback and questions.

Consultation starts in October 2024 with several school communities that may be affected by catchment changes. The goal of consultation is to listen to parents, staff, and community feedback and questions and to respond with any necessary changes to the catchment change plan. Feedback collected during community consultation process will enable the Board to make a decision about a catchment change by May-June 2025.

The Board of Education has advocated for a new elementary school in the Pineview Valley since 2020 due to notable space pressures in the southwest sector, notably McGowan Park Elementary School that continues to be at 160% capacity utilization.

Following the announcement of funding support from the Government of BC on February 22, 2023, the Pineview Valley Community Engagement Committee was established. The committee included a group of representatives from various community partners, parents, employee groups, associations, senior staff, trustees, and the Ministry of Education and Child Care.

Following a public consultation process in early 2024, the school was named Sníne Elementary. Sníne (pronounced Sneena) is the Secwépemc word for owl, and symbolizes strength, wisdom, and guidance. The name was brought forward to the Tk'emlúps te Secwépemc fluent Elders working group (Wumecwílč - Bringing the language forward-back). The Secwépemc have many legends of Owl not only being a messenger but also being a teacher of children. The naming committee and consultation process included voices from Tk'emlúps te Secwépemc Chief and Council, the District Aboriginal Education Council, employee executive groups, the District Parent Advisory Council, parents, community partners, and students.



Thank You

